



BODENSEE TRIPS & TOURS

SALESGUIDE



WELCOME TO LAKE CONSTANCE IN THE HEART OF EUROPE

Natural paradise, adventure land, place of longing: Lake Constance is more than Germany's largest inland waters. Those who call it the „Swabian Sea“ are not exaggerating: with an area of around 210 square miles, it offers plenty of opportunity to gaze into the distance and let your soul soar free. The 273-kilometre-long shore, shared by Germany, Austria and Switzerland - together with the nearby Principality of Liechtenstein, forms the so-called „four-country region“.

As international as the local residents are, so diverse is the landscape around Central Europe's third largest lake: turquoise water, islands full of palm trees and banana trees, mountains over 8,000 feet in altitude, clean, healthy air... A stay here is a balm for body and soul in every season.

The natural attractiveness of the region invites you to a wide range of activities; the list of sights and possible pursuits is long. There is as much to discover for water sports fans as there is for hiking enthusiasts. Those who love art and culture will be just as excited as those who enjoy culinary specialities.

Suggesting individual itineraries from this wealth of possibilities - that is where our expertise lies. As your local contact, we are very familiar with local, regional and seasonal conditions and thus ensure that your stay will be a unforgettable experience. We offer you all organizational services from a single source: this is our promise to you and the standard by which you can measure us.

We have decades of experience in the field of international guest services; we can draw on a broad, reliable network, and we are driven by absolute passion - for the region we live in and for what we do. That's why it is so important for us to make the Lake Constance region an experience for you - with all its natural beauty, the high quality of life and authentic warmth and hospitality.

We look forward to your inquiry - and to welcoming you soon in one of the most beautiful areas of Europe!

See you soon - Your team from Bodensee Trips & Tours



CONTENT

5	WHAT MAKES US DIFFERENT
6	MAP
8	GOOD TO KNOW CLIMATE
10	ARRIVAL AND MOBILITY ON SITE
12	TRANSFERS
14	TOUR SUGGESTIONS
22	HOTELS
34	RESTAURANTS
42	SUPPORTING PROGRAM
66	LOCATIONS
72	PRESENTATION BODENSEE TRIPS & TOURS
73	HOST WITH PASSION
74	OUR NETWORK
75	CONTACT IMPRESSUM

DISCOVER WHAT MAKES US DIFFERENT

NATURAL BEAUTY

The Lake Constance region fascinates with its scenic beauty and unspoilt nature in many places - here the world is still in order. Whether it's a sundowner by the crystal-clear lake, a winter walk through quiet woods or the enjoyment of delicious seasonal organic products: To respect and enjoy the cycle of nature is one of the secrets of success of the region, which you can discover together with us.

BOUNDLESS FREEDOM

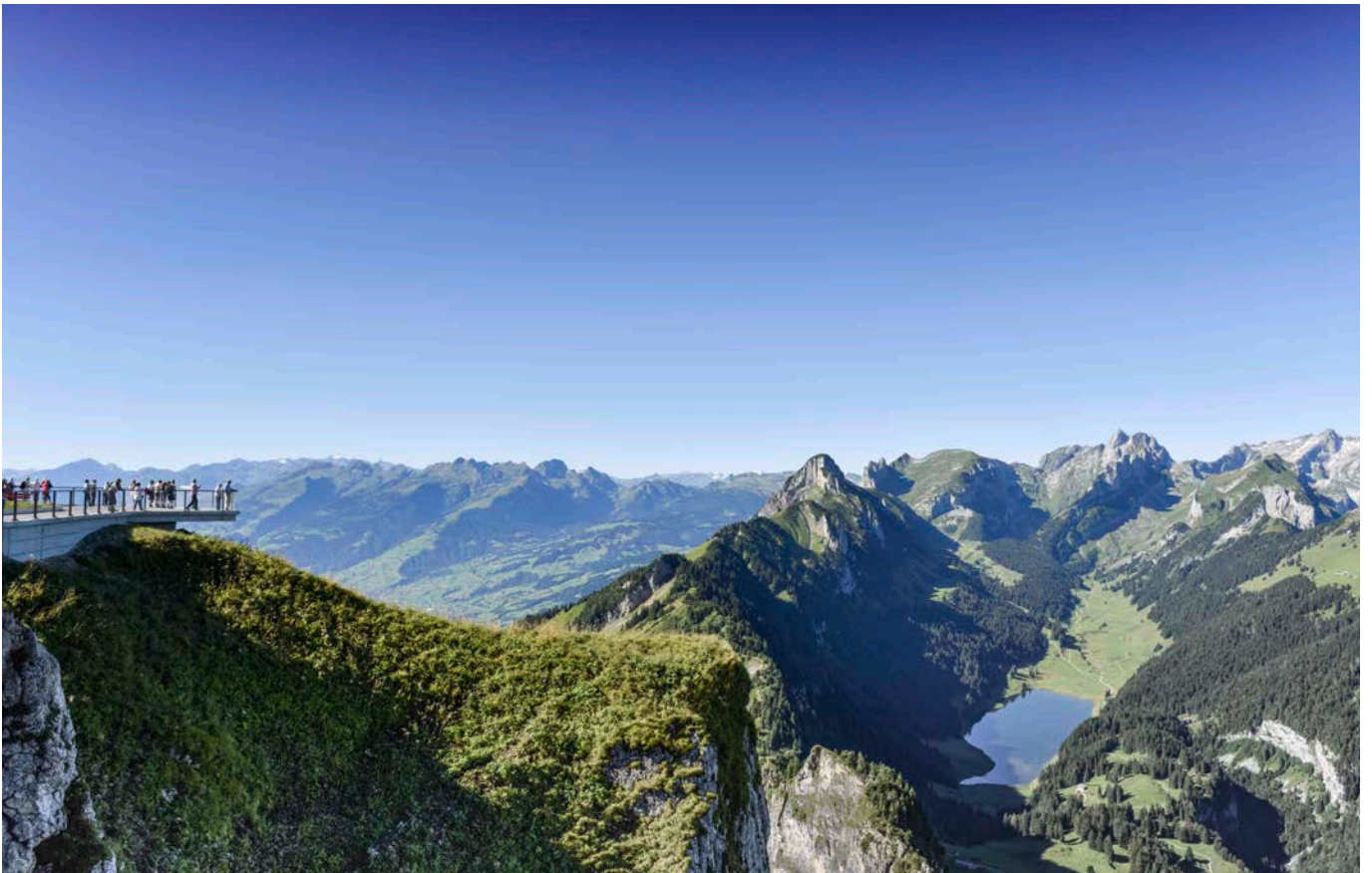
If you travel in the Lake Constance region, you can cross four different national borders in one day - without having to overcome major language barriers. You can make yourself understood in German in Switzerland and Austria as well as in Liechtenstein. We will be happy to provide you with the most important regional idioms - because there are plenty of them.

GENUINE HOSPITALITY

Water dream, mountain top happiness, recreational effect: it's easy to feel good here. This is also due to the locals, who welcome their guests with sincere cordiality. Lake Constance connects people not only on the map, but also in their attitude to life. You too can enjoy this relaxed lifestyle full of charm and joy!

HEALTHY CLIMATE

Fresh, healthy air and a pleasant, almost Mediterranean climate - this is what the area has been known for, for decades. There's a reason why the density of health resorts and spas is particularly high here: Lake Constance and the mountains, many wooded areas and extensive green spaces ensure that your stay is relaxing in all seasons.



LAKE CONSTANCE



1:4

ZURICH



EUROPE



> Munich
(209 km)

Salem
ngen

Meersburg

STANCE

Lake Constance

FRIEDRICHSHAFEN

96

Romanshorn

LINDAU

LOCHAU

Rhine

BREGENZ

HARD



SANKT GALLEN

Gossau

1

1

13

Dornbirn

Appenzell



14

Feldkirch

13



GOOD TO KNOW

Information on travelling in the Lake Constance region



Language

German is spoken throughout the region, sometimes with a regional or local dialect (Swabian, Vorarlbergerisch, Schwyzerdütsch/Swiss German). Due to the many international visitors to the region, you can also communicate with most service providers in English without any problems.

Currency

The official currency in Germany and Austria is the euro (€), while in Switzerland and the Principality of Liechtenstein it is the Swiss franc (CHF). As a rule, both currencies are accepted in border areas. In all four countries you can pay by credit card, but there are many smaller shops and restaurants where you can only pay cash. Tickets for public transport bought directly in the vehicle (e.g. ferry or bus) often also have to be paid for in cash.

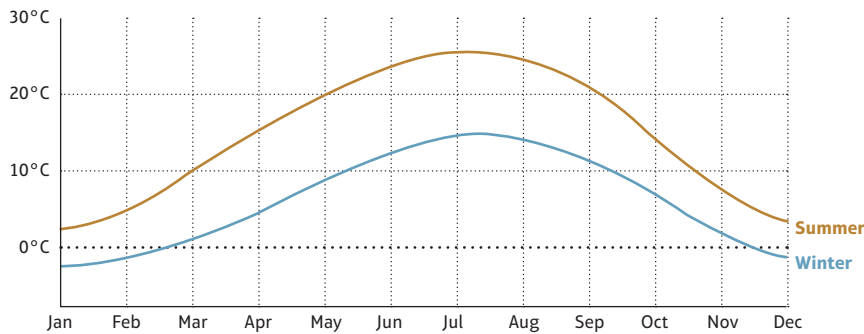
Passport control

If you travel in the international Lake Constance region, it is very likely that you will cross a national border - sometimes even several times a day. While the border crossings between Germany and Austria are not checked, random passport checks are carried out at the Swiss and Liechtenstein borders. You should therefore always carry your identity card or passport with you.

Roaming

Because the four countries are so close to each other, mobile phones often book themselves automatically into international networks. Since June 2017 European users benefit from standardized roaming tariffs in 28 EU countries. These include Germany, Austria and the Principality of Liechtenstein - so there are no additional costs for EU users to make calls or surf the internet via mobile data. However, if a German mobile phone logs into the Swiss network and vice versa, this can lead to high roaming costs. It is therefore recommended to set the selection of the mobile network to „manual“.

CLIMATE



Winter | Reference month December



Sunrise 8:00am



Sunset 4:29pm



Sunshine hours Ø 2 hours



Amount of rain Ø 2 inches/50 mm



Water temperature min. 37°F/3°C

Sommer | Reference month June



Sunrise 5:23am



Sunset 9:22pm



Sunshine hours Ø 8 hours



Amount of rain Ø 4 inches/100 mm



Water temperature max. 60°F/19°C

Climate

The climate in the region is generally mild, as Lake Constance acts as a large heat reservoir. As a light breeze usually blows across the lake, oppressive heat is rare in the neighbouring regions. Average temperatures are slightly higher in the hilly surrounding areas, and then lower again in the mountains.

Spring

Spring usually arrives early at Lake Constance - fruit blossoming usually begins at the end of April. Temperatures then continue to rise slowly, making May and June ideal for hikers and cyclists in particular. If you're brave enough, you can swim in Lake Constance for the first time in May.

Summer

With average temperatures of 75°F/24°C, July and August are the hottest months. Near the mountains, however, thunderstorms can often occur. The so-called 'Föhn wind' can cause a strong swell on the water, especially on the eastern shore of Lake Constance - but also provides fantastic views with miles of distant visibility.

Autumn

Lake Constance retains the warmth of summer for a long time - temperatures are pleasantly mild into the autumn. The brightly coloured trees and the golden light are especially appealing for photographers. The humidity of Lake Constance often results in haze or fog, which also contributes to a very special atmosphere.

Winter

Winters at Lake Constance are rather mild, with fewer than 100 days of frost. At higher altitudes, however, it gets cooler and snowfall is more frequent. The cold, clear air also conjures up spectacular sunsets over the lake. The last time that Lake Constance completely froze over was in the winter of 1962/1963.

ARRIVAL AND MOBILITY ON SITE



Distance to the airports in the region

Country/City	Bodensee Airport Friedrichshafen FDH (D)	Allgäu Airport Memmingen FMM (D)	Airport Stuttgart STR (D)	Airport Munich MUC (D)	Airport Altenrhein ACH (CH)	Airport Zurich ZRH (CH)
Germany						
Lindau	30 km	75 km	208 km	210 km	35 km	148 km
Island Reichenau	43 km	153 km	173 km	292 km	58 km	76 km
Constance	32 km	120 km	173 km	258 km	52 km	69 km
Oberstaufen	60 km	84 km	210 km	200 km	60 km	156 km
Austria						
Lochau/Bregenz	31 km	73 km	198 km	212 km	25 km	122 km
Dornbirn	47 km	55 km	213 km	227 km	29 km	116 km
Switzerland						
St. Gallen	78 km	119 km	225 km	258 km	23 km	82 km

RAILWAY CONNECTIONS EURO- / INTERCITY

From Lindau (Germany)

- Eurocity (EC) to Zurich > Travel time 2:04 h
- Eurocity (EC) to Munich > Travel time 2:35 h
- Intercity (IC) to Innsbruck > Travel time 3:04 h

From Constance (Germany)

- Intercity (IC) to Stuttgart > Travel time 2:39 h
- Intercity (IC) to Zurich > Travel time 1:16 h

From Bregenz (Austria)

- Eurocity (EC) to Zurich > Travel time 1:52 h
- Eurocity (EC) to Munich > Travel time 2:52 h

From St. Gallen (Switzerland)

- Intercity (IC) to Zurich main station > Travel time 1:20 h
- Intercity (IC) to Zurich Airport > Travel time 1:00 h
- Intercity (IC) to Bern > Travel time 2:24 h

COACHES

Lindau (Germany)

Getting on and off Lindau island

Coaches on the Lindau Island may stop for a maximum of 15 minutes to allow passengers to get on and off.

- Stopping points: The lay-bay in front of the Therese-von-Bayern-Platz (Zwanzigerstraße). Turning possibility at the roundabout at the end of Zwanzigerstraße.
- Bus stop at the roundabout (Heidenmauer) before entering the old town - after passing over the bridge to the island, make a U-turn at the roundabout (Heidenmauer), the bus stop is located immediately after leaving the roundabout.

Parking spaces on the mainland Lindau:

Ladestraße and Karl-Bever-Platz (P3)

2.60 € per hour, 25 € for a day ticket

Constance (Germany)

Döbele parking space / approach via Grenzbachstraße

The bus parking lot is located on the right hand side of the parking lot. The lanes must be kept clear at all times.

- A total of 13 parking spaces, 7 of which are at your disposal
- 0 to 8 hours: 1.50 € per hour, each additional hour 2.00 €, day ticket 18.00 €

SEA LIFE Constance / Hafenstrasse

Please follow the signs on site. The customs crossing is closed for motorized individual traffic and is only passable by pedestrians.

- The turning area at the end of Hafenstrasse as well as the areas for customs clearance and for the emergency vehicles of customs and federal police must be kept clear - towing is subject to a charge.
- A total of 6 free coach parking spaces

Exit/ Entry in Hafenstrasse

The area of the extended Hafenstrasse (pedestrian zone) serves only as a stopping zone, parking is prohibited here. Beware of bumps, which may cause problems with low lying buses.

Parking space „Bodenseeforum“

Can be reached via Reichenaustraße in the direction of Constance (center).

- A total of 5 partially paved bus parking spaces.
- Day ticket 6,00 €, entitles you to use the bus lines which leave from the parking lot (bus lines 4/13 & 13/4 as well as line 6, please note the information boards on site.
- On Saturdays there is a shuttle bus to the city center every 20 minutes.

Bregenz (Austria) fee required

Parking space „Seestadtareal“

Bahnhofstraße 35, max. parking time 3 hours

Parking space Westnext to Casino

Sägerstraße 5, 5,00 € per hour; no daily rate

Parking space North

Reichsstraße (next to Pfänderbahn), 5,00 € per hour; no daily rate, 3 hours will be refunded when using the Pfänderbahn

Parking space East „Festspiele“

Mehreräuserstraße

St. Gallen (Switzerland)

Exit/ Entry:

Lagerstrasse

Parking space Museumstrasse and Spelteriniplatz

Free of charge

Vaduz (Liechtenstein) fee required

Rheinparkstadion

The bus parking lot is located at the Rheinparkstadion. The bus terminal in the center of Vaduz is reserved only for getting on and off.

TRANSFERS

How to get to your destination easily

No matter whether you are travelling in the four-country region for just a few days or for a longer period: You can discover a lot of interesting sights here. To make sure you get from A to B safely and comfortably, we will take care of your transfer - whether it's a pick-up from the airport or railway station, a trip to the port or a transfer between your destinations. Depending on the size of the group and your requirements, we will find you the right partner for your route planning.

What you can rely on from all providers: They are always modern and safe vehicles that meet the latest requirements. The specially trained drivers not only have all the necessary licences, but also a good knowledge of the country.

Flexible offers, realistic schedules, smooth processes: we take care of it.

Burkhard Bus Tours

Hauptstrasse 2 | 88161 Lindenberg | Germany

/ Germany, Austria

Minibuses, coaches, double-decker coaches

- From 12 persons
- Prices on request (depending on route and bus size)
- German speaking, english speaking on request
- 1 coach (44 seats) incl. WC, air conditioning, kitchen, large seat pitch
- 1 coach (51 seats) incl. WC, air conditioning, kitchen
- 1 coach (51 seats) incl. WC, air conditioning, large seat pitch
- 1 luxury bistro bus (48-52 seats) incl. WC, air conditioning, kitchen, large seat pitch
- Equipment of the long-distance coaches: state-of-the-art safety technology, fully air-conditioned, with high seating comfort and comfortable seat spacing, footrests, folding tables, WC / washroom, kitchen on board

Bus Operator „Omnibus Held“

Hans-Liebherr-Strasse 20 | 88161 Lindenberg | Germany

/ Germany, Austria, Switzerland, Liechtenstein

Minibuses, coaches, double-decker coaches

- From 8 persons
- Prices on request (depending on route and bus size)
- German speaking, english speaking on request
- 4 minibuses, 7 long-distance coaches
- Equipment of long-distance coaches: state-of-the-art safety technology, fully air-conditioned, with high seating comfort and comfortable seat spacing, sleeping seats, footrests, armrests, folding tables, WC / washroom, kitchen on board, DVD player



Loacker Tours GmbH

Bundesstrasse 17 | 6842 Koblach | Austria

/ Austria, Germany, Switzerland, Liechtenstein

Minibuses, coaches, double-decker coaches

- From 1 person
- Prices on request (depending on route and bus size)
- German speaking, english speaking on request
- 4 minibuses, 10 long-distance coaches
- Equipment of long-distance coaches: modern and comfortable, non-smoking, safety belts for all seats, air conditioning, on-board toilet, kitchen and DVD player

Sea Taxi

YachtHotel Helvetia | Inselgraben 3 | 88131 Lindau | Germany

/ Germany, Austria

Shuttleservice on the Lake Constance

- Max. 12 persons
- From 7 € per person
- From 15 minutes, depending on the route
- Journey to individual destinations at the desired times
- Weather dependent

Routes:

- Lindau – Wasserburg – Lindau
- Lindau – Nonnenhorn – Lindau
- Lindau – Langenargen – Lindau
- Lindau – Camping Zech – Lindau
- Lindau – Bregenz – Lindau
- Lindau – Fussach – Lindau

Limousine Service Lake Constance

Lindenplatz 6 | 88142 Wasserburg am Bodensee | Germany

/ Germany, Austria, Switzerland

Airport transfer, event support, chauffeur and limousine service

- From 1 person
- From 100 € one way
- German and English speaking
- Fleet: BMW (7 series long version Hybrid; 2 series Active Tourer Hybrid; iX3; ...) and Mercedes (E-Class, T-Modell Hybrid; EQV long version)
- Vehicle equipment: tinted windows (rear), mineral water, small snacks, tissues, refreshing tissues
- For bigger events an expansion of the fleet is possible
- Also available for itineraries lasting several days

Price examples:

Airport transfer Friedrichshafen <-> Lindau Mercedes E-, S- & V-class, Audi A8: 100 €

Chauffeur-Service with Mercedes E-class

- 4 hours 310 €
- 6 hours 390 €
- 8 hours 510 €
- 10 hours 650 €
- 12 hours 720 €

TOUR SUGGESTIONS

Flower Island Mainau



Our tour recommendations for you

If you ask us what you need to see in the four-country region, we say: everything. Since this is probably not quite compatible with your time frame, we have, of course, some specific suggestions for you.

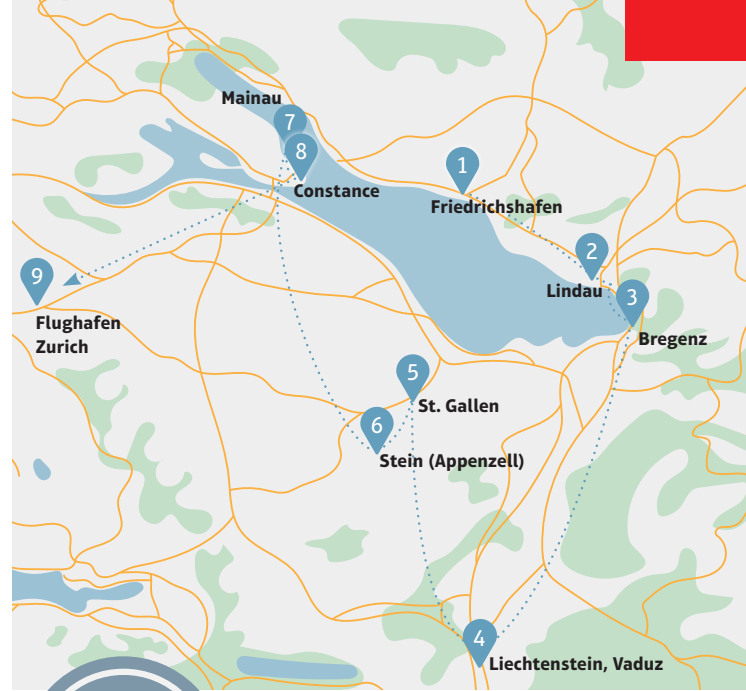
On the following pages you will find some possible combinations of the highlights that are most popular with our national and international guests. Please consider these tours as a recommendation and inspiration - of course, your individual ideas are decisive for a concrete planning.

All the modules presented in this booklet can either be booked as a complete package or integrated into existing programmes in their individual components.

Depending on the orientation of the trip, the focus can be on nature experiences, culinary delights or group experiences in an unusual setting.

International highlights, interesting background knowledge, specific planning for target-groups: we take care of it.

** The prices of the tours presented on the following pages are exclusive of transfers and include meals as indicated. Drinks are not included in the price.*



from
1035 €
per person*

5 DAYS – ROUND TRIP LAKE CONSTANCE

Recommended season
spring and autumn

Recommended group size
15 - 20 people

DAY 1



- Arrival at **Friedrichshafen** airport
- Lunch at Zeppelin hangar restaurant
- Guided tour through the Zeppelin hangar with optional Zeppelin flight
- Guides tour of **Lindau island**
- Dinner and overnight stay in Lindau

DAY 4



- Guided tour of **Mainau - the flower island**
- lunch on the island of Mainau
- City tour of **Constance**
- Time at leisure in Constance
- Dinner and Overnight stay in Constance

DAY 2



- Trip on the cable car to the Pfänder mountain **Bregenz**
- Tour of the Bregenz Festival floating stage
- Boat trip and lunch on board the MS Oesterreich
- City tour of **Vaduz** in Liechtenstein
- Dinner and overnight stay in **St. Gallen**

DAY 5



- Departure from **Zurich** airport

DAY 3



- Visit to the Abbey Library **St. Gallen**
- City tour of St. Gallen
- Guided tour of the Appenzell cheese dairy incl. cheese fondue
- Guided tour of the Chocolarium
- Dinner and overnight stay in St. Gallen





from
1.215 €
per person*

4 DAYS – INCENTIVE-TRIP

Recommended Season
spring and autumn

Recommended group size
15 – 20 people

DAY 1



- Arrival at **Friedrichshafen** airport (via Frankfurt / FRA)
- Lunch at Zeppelin hangar restaurant
- Guided tour through the Zeppelin hangar and Zeppelin sightseeing flight
- Free time in **Lindau**
- Wine tasting and snacks
- Overnight stay in Lindau

DAY 3



- Guided bike tour to **Bregenz**
- Cable car ride to the Pfänder mountain including a light lunch
- Tour of the Bregenz Festival floating stage
- Boat trip to Bad Schachen, coffee break at the lake-side swimming spot ‚Lindenhofbad‘
- Visit to the peace museum - Villa Lindenhof
- Time at your disposal
- Dinner and overnight stay in Lindau

DAY 2



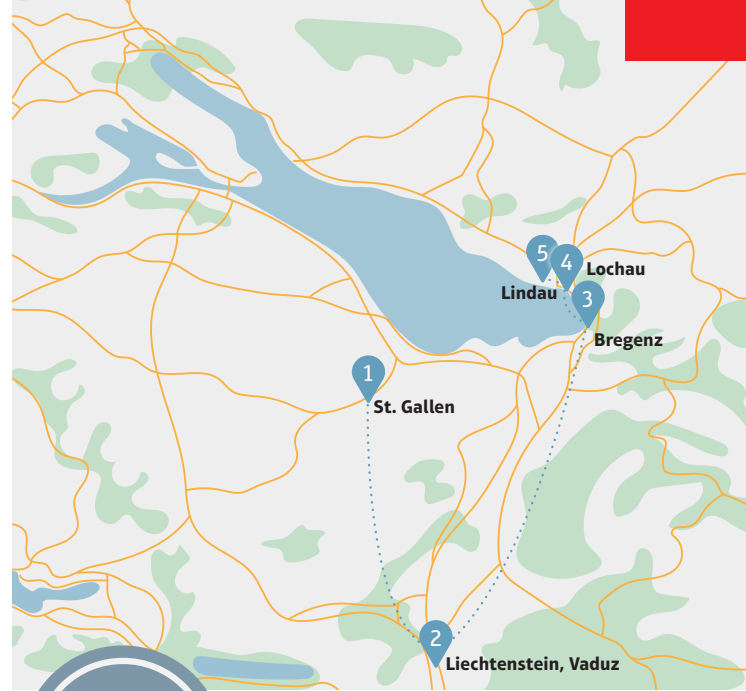
- A look behind the scenes of Lindau’s puppet theater (Marionettenoper)
- A journey on the Hohentwiel, a beautiful-restored steamship, including lunch
- Guided bike tour to **Bregenz**
- Trip on the cable car to the Pfänder mountain Bregenz
- Tour of the Bregenz Festival floating stage
- Dinner and overnight stay in Lindau

DAY 4



- Departure from **Friedrichshafen** airport





from
710 €
per person*

4 DAYS – CITY HOPPING AT LAKE CONSTANCE

Recommended season
spring and autumn

Recommended group size
10 – 25 people

DAY 1



- Arrival in **St. Gall**
- City tour of St. Gall
- Visit to the Abbey Library St. Gall
- Time at your disposal
- Dinner and overnight stay in St. Gall

DAY 3



- Guided tour of the of **Lindau island**
- lunch on Lindau island
- 3-country panoramic boat trip on Lake Constance incl. coffee break
- Wine tasting and guided tour incl. dinner at a winery
- Overnight stay in Lindau

DAY 2



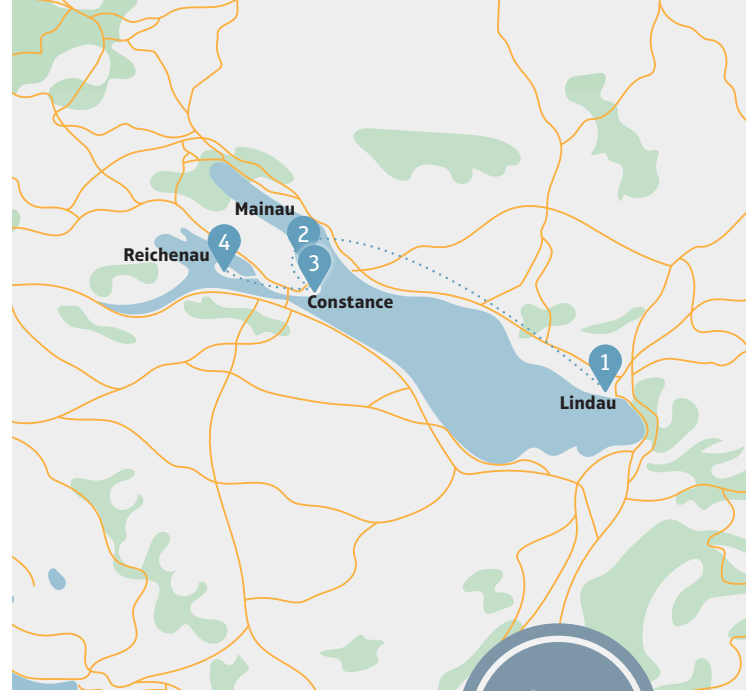
- City tour of **Vaduz** in Liechtenstein,
- visit to the Treasury
- Cable car ride to the Pfänder mountain **Bregenz**
- Lunch on the mountain
- Guided city tour of Bregenz
- Dinner and overnight stay in **Lochau**

DAY 4



- Departure





from
620 €
per person*

4 DAYS – ISLAND HOPPING AT LAKE CONSTANCE

Recommended season
spring, summer, autumn

Recommended group size
10 – 20 people

DAY 1



- Arrival in Lindau
- Guided tour of **Lindau island**
- A look behind the scenes of the Lindau puppet opera
- 3-country panoramic boat trip on Lake Constance
- Time at your disposal in Lindau
- Dinner and overnight stay in Lindau

DAY 3



- Guided tour to **Reichenau island** by bus
- Lunch on Reichenau
- Time at leisure on the island of Reichenau
- Beer tasting at the Reichenau Island Brewery
- Dinner and overnight stay on the island of Reichenau

DAY 2



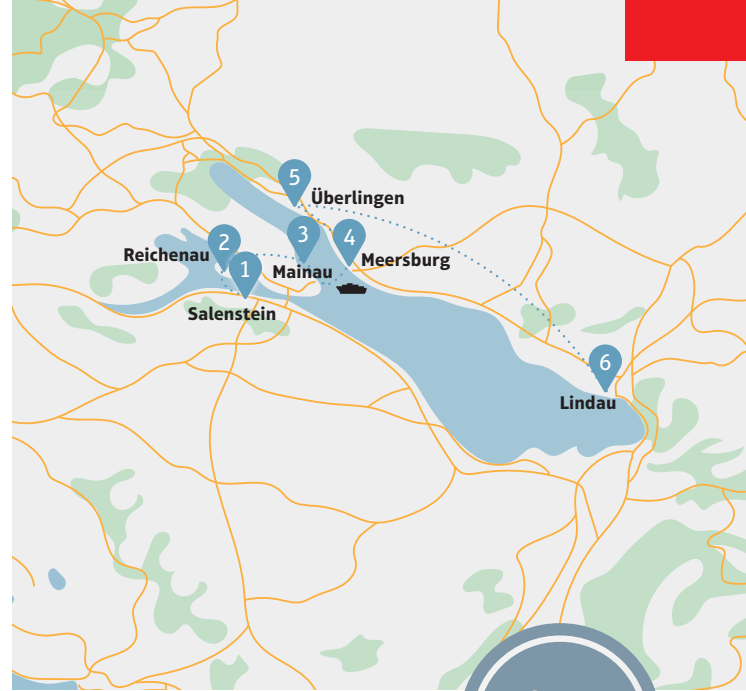
- Visit **Mainau - the flower island**
- Guided tour of Mainau island
- Lunch at the island restaurant
- Time at leisure on the island of Mainau
- Dinner and overnight stay in in Constance

DAY 4



- Departure





3 DAYS – GARDENS OF LAKE CONSTANCE

Recommended season
spring and summer

Recommended group size
10 – 25 people

DAY 1



- Arrival in Salenstein
- Visit **Arenenberg** castle and park
- Guided tour through the herb garden of **Reichenau - the vegetable island**
- Dinner and overnight stay on Reichenau island

DAY 2



- Guided tour of **Mainau - the flower island**
- Lunch on Mainau island
- Dinner and overnight stay in **Lindau**

DAY 3



- Guided tour through the Lindenhofpark along the garden-culture-path
- Guided tour of Lindau island
- Lunch on Lindau island
- Departure





4 DAYS – CULTURE AND CULINARY DELIGHTS AT LAKE CONSTANCE

Recommended season
autumn

Recommended group size
10 – 25 people

DAY 1

- Arrival in **Constance**
- Guided tour through Constance
- Beer tasting at the Reichenau Island Brewery
- Dinner and overnight stay in Reichenau

DAY 3

- Guided tour through St. Gall
- A look behind the scenes of the Lindau puppet opera
- 3-country panoramic boat trip on Lake Constance
- Wine tasting, dinner and overnight stay in **Lindau**

DAY 2

- Guided tour of the Maestrani Chocolarium centre and production of your own chocolate creation
- Guided tour, demonstration of cheese-making and lunch in Appenzell
- Visit the Stiftsbezirk of St. Gall
- Dinner and overnight stay in **St. Gall**

DAY 4

- Guided tour of **Lindau island**
- Artmuseum Lindau
- Departure





HOTELS

OUR HOTEL SCORES

The hotel ratings shown here are the averages from the rating portals Booking, Holidaycheck, Tripadvisor and Google. We update the values every 3 months and incorporate them into the latest version of this sales document. The rating should help you to decide on the accommodation and give you a first impression. We have deliberately chosen the average of the portals mentioned above to ensure a fair overview.



Here, staying overnight becomes an experience

Falling peacefully asleep in paradise with a mountain view?
Waking up to the gentle ripple of the waves in Lake Constance?
In the middle of the action or far away from everything? With a
small team or a large group?

No matter what requirements you have: The hotels in the four-
country region can certainly meet them. We have put together
a large selection of the hotels with whom we cooperate. As we
have all visited and tested these accommodations personally,
we can also answer any questions you may have - and recom-
mend the options that suit you best.

Depending on the size of the group, we will arrange the most
favourable rates and conditions for you, so that you and your
guests can concentrate on the essentials: admiring the sur-
roundings and enjoying the hospitality.

**Expert recommendations, customized offers, attractive
rates: We'll take care of it.**

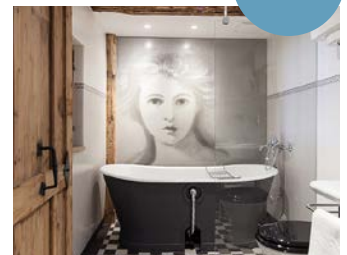


Alter Schulplatz 2
88131 Lindau (island)

Hotel Alte Schule

The owner-managed bed-and-breakfast hotel has injected new life and the most modern amenities into a historic building after an extensive and loving renovation. The preserved architectural elements give the individually designed rooms a special charm. Warm hospitality makes each guest feel welcome.

- 15 rooms (5 single, 5 double, 3 double comfort, 2 suites)
- Lounge
- Directly opposite the Inselhalle Lindau - conference center
- Bicycles available for guests to use
- Air-conditioned rooms
- Mobile key using a smart phone



Alter Schulplatz 1
88131 Lindau (island)

Boutique Hotel Adara

This centrally located boutique hotel was designed in a medieval building with great attention to detail - each room has an individual touch. With a view over the rooftops of Lindau island, you can enjoy elegance, comfort and modern interior design.

- 17 double rooms
- Restaurant (traditional to exotic)
- Directly opposite the Inselhalle Lindau - conference center
- Suite over three floors with pool and roof terrace

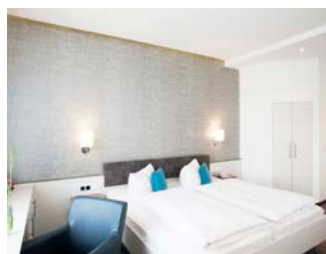


Bei der Heidenmauer 11
D-88313 Lindau (island)

Hotel Garni Brugger

The family-run bed- and-breakfast hotel is centrally located opposite the civic gardens on Lindau island, from where you can quickly reach all the main sights. The lakeside and Inselhalle conference centre are on the doorstep.

- 23 rooms (15 double rooms, 4 single rooms, 4 family rooms)
- Spa area from September to April (1 sauna, 1 steam bath, 1 heat cabin)
- Underground parking lot near the hotel



Friedrichshafener Straße 19
D-88131 Lindau (mainland)

Ebner Boutique-Hotel und Konditorei

From this hotel it is a 15-minute walk to the town center and to the shore of Lake Constance. The renovated rooms and suites offer a modern, uncomplicated living concept. The hotel's own traditional café serves pastries, their own chocolate and cakes.

- 19 rooms (15 double rooms, 4 single rooms)
- In-house café and pastry shop
- Terrace, garden
- Lawn and barbecue in garden
- Own parking spaces, bus parking
- Fans available



Maximilianstr. 42
D-88131 Lindau (island)

Insel Hotel

This cosy hotel is located in the heart of the Lindau Island, surrounded by winding alleys and not far from the harbor. Thanks to its central location in the pedestrian zone, all sights as well as stores can be easily reached from here.

- 28 rooms (8 double rooms, 20 single rooms)
- Terrace Café
- Own parking spaces



Bregenzerstraße 16/18
D-88131 Lindau (mainland)

Hotel/Guest House Seereich

This new house is located in a quiet area just off Lindau island. The modern rooms are lovingly furnished. In the small, private garden you can relax with a view of Lake Constance.

- 30 rooms (29 double rooms, 1 single room)
- Sunbathing lawn
- Own parking spaces

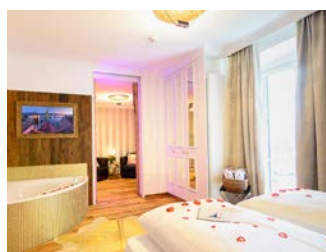


Dammgasse 2
D-88131 Lindau (island)

Hotel Lindauer Hof

This traditional family-run hotel is located directly at the famous harbor on Lindau island. The house offers a successful mixture of tradition and modernity, style and enchanting ambience.

- 36 rooms (36 double rooms + suites, also as single rooms)
- Restaurant (regional, classic), outdoor seating, sun room
- 2 conference rooms (max. 12 or 20 people)
- Own parking spaces
- Partial air conditioning



Seepromenade 3
D-88131 Lindau (island)

YachtHotel Helvetia

This hotel on Lindau island is directly located on the harbor promenade and therefore in a completely central location. It impresses with its ultra-modern design and individually designed theme rooms and suites. A shuttle service is also offered with Sea Taxi.

- 42 rooms (36 double rooms, 6 single rooms)
- Restaurant (regional, organic food), Harbour Lounge bar
- Overnight stay on hotel yacht possible
- Spa and fitness area (Alpine Lounge Sauna & Infinity Pool on the roof, Japanese Zen Lounge, Onsenity Activity Pool, White Lounge, steam temple, private spa, relaxation rooms, treatments)
- Boat trips around the island, sailing events
- Own parking spaces
- Air conditioning in lake view rooms and suites



Ludwigstr. 23
D-88131 Lindau (island)

Hotel Reutemann-Seegarten

4-star hotel, directly on the lake

The Hotel Reutemann-Seegarten is located directly on the promenade on Lindau island. It is connected with a hotel corridor to the Hotel Bayerischer Hof and is therefore also ideally suited for larger groups. The view of the harbour entrance, Lake Constance and the Austrian mountains is captivating.

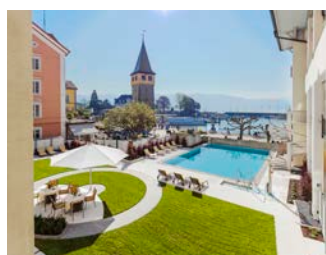
- 62 rooms (54 double rooms, 8 single rooms)
- Restaurant (regional, international), garden terrace
- 6 conference rooms (in connection with Hotel Bayerischer Hof; max. 300 people)
- Spa and fitness area (2 saunas, steam room, heated baths, powerful showers, outdoor pool with garden, indoor pool, fitness room, treatments)
- Own parking spaces
- Partial air conditioning

Hotel Bayerischer Hof

Highest quality, directy on the lake

The Hotel Bayerischer Hof is located directly on the promenade on the Lindauer Insel. It is connected to the Hotel Reutemann-Seegarten with a hotel corridor and is therefore also ideally suited for larger groups. The view of the harbour entrance, Lake Constance and the Austrian mountains is enchanting.

- 104 rooms (94 double rooms, 6 single rooms, 4 suites)
- restaurant (regional, international), bar, garden terrace, café with outdoor terrace directly on the waterfront
- 6 conference rooms (in connection with Hotel Reutemann Seegarten; max. 300 people)
- Spa and fitness area (2 saunas, steam room, heated baths, powerful showers, outdoor pool with garden, indoor pool, fitness room, treatments)
- Own parking spaces
- Air conditioned room



Bahnhofplatz 2 (harbor promenade)
D-88131 Lindau (island)

7,9/10



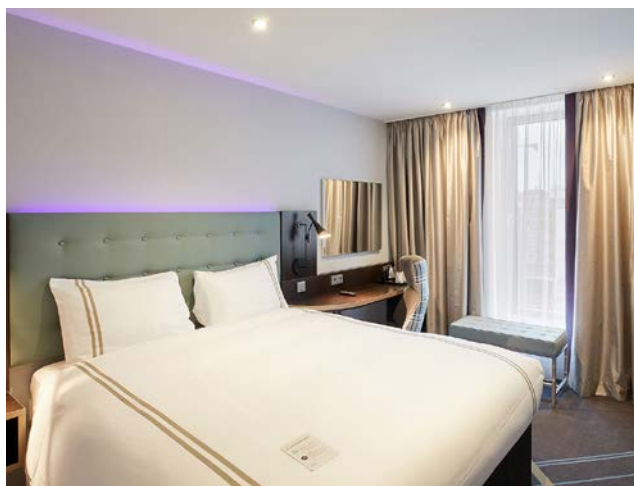
Bahnhofplatz 4-6
D-88131 Lindau (island)

Hotel Vis à Vis

The Hotel Vis à vis offers suitable accommodation for larger groups. The harbor quayside, island railway station and bus-stop bays are in the immediate vicinity.

- 72 rooms (48 double rooms, 24 single rooms)
- Café with bar / bistro (from coffee to cocktails)
- Spa and fitness area (1 sauna and gym equipment)
- Own parking spaces
- Room fans available

8,4/10

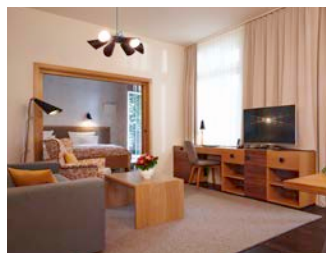


Josephine-Hirner-Str. 4
D-88131 Lindau (mainland)

Premier Inn Lindau

This modern hotel is extremely easy to reach thanks to its location on the freeway. The trade fair center and airport at Friedrichshafen, as well as important destinations in neighboring Vorarlberg / Austria, not to mention Lindau island, can all be reached quickly and easily.

- 113 double rooms
- Bar
- 5 conference rooms (for up to 120 people)
- Own parking spaces
- Air conditioning in all rooms and meeting rooms

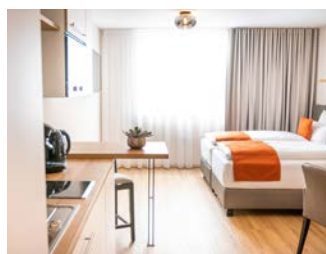


Bad Schachen 1
D-88131 Lindau (mainland)

Hotel Bad Schachen

This historic hotel on the mainland impresses with its idyllic location in the middle of an extensive park directly on the lake shore. It offers a magnificent view over Lake Constance and the Alps. The hotel's lakeside bathing complex is an architectural jewel of the art nouveau period.

- 128 rooms (81 double rooms, 47 single rooms)
- Restaurant (regional, classic, modern, mediterranean), lake terrace, hotel lobby, the Fischerstube snug
- 4 seminar and group rooms, 1 salon (max. 250 people)
- Spa and fitness area (indoor pool with sunbathing lawn, 2 saunas, rasul bath, brine steam room, relaxation and rest rooms, fitness room, treatments), in summer the park, beach and outdoor pool are open
- Own parking spaces, bus parking



Bregenzerstr. 152
D-88131 Lindau-Zech

bodenseezeit Apartmenthotel garni

The Hotel Bodenseezeit is located directly on the German-Austrian border in Lindau Zech. Only opened in 2020, the hotel ensures a relaxing time on Lake Constance. Lindau Island with its lions and lighthouse is just a few kilometers away.

- 25 Apartments
- Hotel bar
- bicycles for rent
- Underground parking garage
- Separately bookable breakfast
- Terrace / garden



Ludwigstraße 7
D-88131 Lindau (island)

Hotel Ratsstuben

The unique location of the Hotel Ratsstuben on the island of Lindau in the immediate vicinity of the lake and the spectacular Alpine panorama are extras that create a very special flair at any time of year.

- 10 doublerooms, 4 singlerooms, 2 suites
- Terrace
- bicycles for rent
- continental breakfast



Steigstraße 28
D-88131 Lindau (mainland)

Hotel Garni Reulein

Hotel Garni Reulein in Lindau with impressive mountain and lake views. A feel-good hotel - whether you want to discover the historic island town of Lindau, are traveling on business or just passing through, this is always the right place for you!

- Terrace
- continental breakfast
- Bus parking
- Sea view



Malas 8 – 16
D-87534 Oberstaufen

MONDI-Resort Oberstaufen

This hotel complex consists of 10 houses in alpine style on the outskirts of the health resort Oberstaufen. The extensive complex offers a fascinating view of the foothills of the Allgäu Alps.

- 180 rooms (180 double rooms)
- Restaurant (Italian), Lounge, Bar
- 2 conference rooms (for up to 60 people)
- Spa and fitness area (indoor pool, whirlpool, various saunas, steam room, sunbathing terrace, fitness room, treatments, bowling alley, tennis court)
- Free guest bus, many free additional services with guest card "Oberstaufen Plus"
- Own parking spaces, bus parking

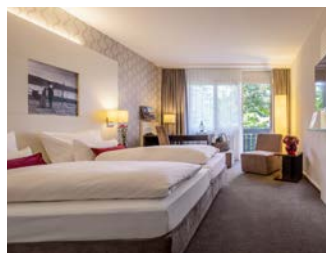


Am Hammerweiher 3
D-88175 Scheidegg

Hotel "edita"

Surrounded by nature and with a view of the Allgäu Alps is the 4-star "edita" hotel in Scheidegg. On the German Alpine Road and close to Lake Constance and Lindau, the hotel is the ideal location for conferences, seminars and events.

- E-charging
- Restaurant
- Conference room
- Spa area
- Terrace/garden



Pirminstr. 141
D-78479 Insel Reichenau

GANTER HOTEL and MOHREN Restaurant

This family-run traditional hotel is located on the island of Reichenau on Lake Constance and thus in picturesque, natural surroundings. Regardless of whether on business, on an action-packed vacation or simply for pure relaxation: one of the 38 rooms, five individual, modern conference rooms and the best culinary delights await you. Last but not least, wellness treatments and experiences to make your stay extra special.

- 38 rooms
- Restaurant with local specialties in a modern style, bar, terrace
- 2 conference rooms (max. 40 persons), 1 large hall (max. 80 people), 2 meeting and group rooms (max. 12 people)
- Spa and fitness area (2 saunas, 1 steam room, treatments)
- Own parking spaces

CONSTANCE



Reichenaustraße 17
D-78467 Konstanz

47° GANTER HOTEL

47° Ganter Hotel - everything, ... except ordinary. The 47°, your boutique hotel on Lake Constance - directly on the promenade of the Seerhein river - in the newly created urban quarter. The design and furnishings are modern and design-oriented. The 47° - your home away from home, for your business trip, meetings, a weekend trip, for your time-out and wellness. A friendly and highly motivated team under personal management awaits you.

- 99 rooms (89 double rooms, 10 studios)
- Friedrichs restaurant (regional, seasonal and steak specialties), Friedrichs Bar, lounge & terrace
- 6 conference rooms, 150 - 890 square feet for up to 70 people, conference centre next door with room for up to 1,000 people
- On the 6th floor: spa and fitness area with 3 saunas, gym equipment, relaxation area, quiet room, cosmetic treatments and massages, roof terrace with view of Lake Constance and the Alps
- Parking spaces at the Bodensee Forum Konstanz are available for hotel guests (paid separately)
- Ventilation system



PANORAMAHAUS
Hotel- und Gesundheitszentrum Betriebs GmbH & Co KG
Messestraße 1
AT-6850 Dornbirn

Four Points by Sheraton Panoramahaus Hotel Dornbirn

The hotel is located directly at the Dornbirn fair and opposite the largest shopping center in the region. It is particularly suitable for larger groups. The fantastic view of the Austrian mountains can be enjoyed particularly well from the roof terrace, as well as from the outdoor pool.

- 120 rooms (120 double rooms)
- Sky Restaurant (local, international) and Sky Bar
- 6 conference and event rooms (for up to 250 people), 3 breakout rooms
- A spa, fitness, beauty and wellness area covering over 16,000 square feet (saunas, hammam, outdoor and indoor pool, gym, solarium, spa treatments)
- Own parking spaces (underground car park)
- Air conditioned rooms

8,5 / 10

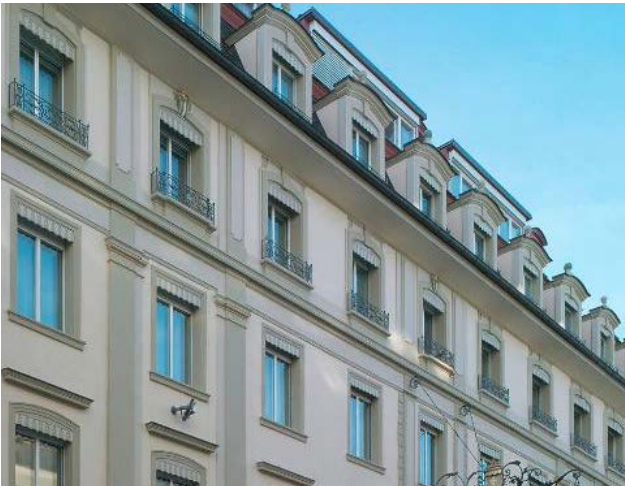


Klostergasse 8
AT-6850 Dornbirn

harry's home Dornbirn

Harry's home impresses with large rooms and plenty of space for everything your heart desires: queen and king-size double beds, a bathroom with shower or bathtub and a coffee or tea station to start the day. The modern apartments and studios also each have a kitchen.

- 64 double rooms, two single rooms suitable for the disabled
- Conference room
- Kitchenette
- Breakfast to go
- Coffee and tea station

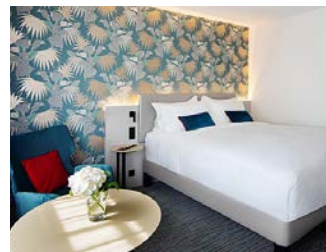


Römerstraße 5
AT - 6900 Bregenz

Hotel Weisses Kreuz

The 4-star Hotel Weisses Kreuz is located in the center of Bregenz, only a few minutes walk from the train station, the harbor, the Pfänderbahn and the Festspielhaus. A substantial breakfast is included in the room rate. The hotel has its own restaurant: Goldener Hirschen, complete with tavern, winebar and pub. The tavern, with a garden, is known for its Austrian cuisine and delicious home cooking.

- 44 rooms
- Goldener Hirschen restaurant with tavern, wine bar and pub
- Parking spaces available in the GWL parking garage
- Individually adjustable heating and air conditioning system
- Beds with high-quality bio-spring mattresses in extra length
- Flat screen with SAT-TV, radio
- Telephone, room safe in laptop size, espresso machine, electric kettle

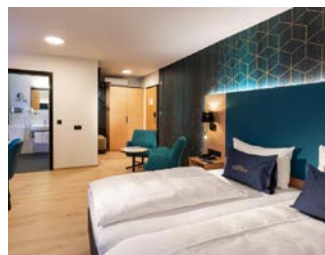


Platz der Wiener Symphoniker 2
AT-6900 Bregenz

Grand Hotel Bregenz - MGallery Hotel Collection

Since 2019, the MGallery Collection also has a location in Bregenz. This modern city hotel, in the mid to upper range, is centrally located, directly in the cultural city of Bregenz on Lake Constance. The French way of life is reflected in the rooms of the hotel as well as in the dishes of the restaurant.

- 105 rooms (78 double rooms, 18 executive, 9 suites)
- DIVVY-Restaurant (French, Austrian, regional), Bar
- 4 meeting rooms, approx. 860 to 2,580 sq.ft. for up to 230 people, food & beverage packages, short break packages
- Wellness area with view over Bregenz (pool, sauna and steam bath, fitness room)
- Parking spaces
- Ventilation system



Kornmarktstraße 16
AT-6900 Bregenz

Hotel Messmer

The 4-star Hotel Messmer is located in Bregenz on the Kornmarkt and its facilities make it ideal for business stays. Located in the middle of the Vierländereck, the conference hotel is an ideal starting point for excursions in the region. In addition to three bright, modern meeting rooms directly on Lake Constance, the hotel also offers the desired catering for conferences.

- 38 rooms
- À la Carte restaurant „Weinstube“ with room for up to 50 people (Vorarlberg specialties and Lake Constance fish)
- Messmer Bar/Café
- 4 seminar rooms, 525 - 1,200 sq.ft. for up to 100 people
- Wellness area with two different types of sauna
- Own parking spaces in a garage



Am Steinenbach 9
AT-6900 Bregenz

Hotel Germania

In the heart of Bregenz, in the immediate vicinity of the harbor lies the Hotel Germania. In the 4 star city hotel, centrally located between lake, mountain and city, both business and leisure travelers will find individual comfort.

- 38 rooms
- Restaurant (Austrian, vegetarian, regional) and City Bar
- 3 seminar rooms (for up to 45 people)
- 2 sun terraces
- City Spa (Finnish sauna, Physiotherm infrared cabin, relaxation room, powerful shower, tea, water and fruit)
- Parking spaces available



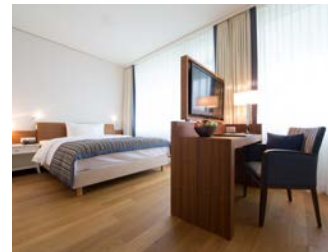
St.-Anna-Straße 11
AT-6900 Bregenz

Hotel Ibis Bregenz

The Hotel Ibis Bregenz is located in the center of Bregenz, in the immediate vicinity of the casino and has a bar. From here it is only 900 m to the valley station of the Pfänderbahn cable car. Just a five-minute walk from the train station, the hotel is not only easy to reach, but also an ideal starting point for excursions around Lake Constance.

- 96 rooms
- Underground parking garage close to the hotel
- Breakfast can be booked separately
- Traditional and regular breakfast
- Conference room

ST. GALLEN

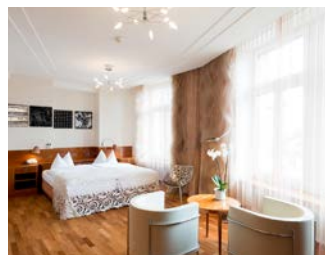


Rorschacher Strasse 311
CH-9016 St. Gallen

Oberwaid AG – The Hotel – The Clinic

This hotel is embedded in nature with an unobstructed view of Lake Constance, the huge private park and the foothills of the Alpstein mountains. It is located on the eastern edge of St. Gallen and impresses with its stylish ambience, high-quality materials and state-of-the-art technology.

- 70 double rooms
- Restaurant (regional, seasonal, high quality), lobby bar, library, lounges on each floor, games room, smoking lounge
- 5 seminar rooms (max. 122 people)
- Spa & wellness area (2 steam baths in the hammam area, bio sauna, outdoor whirlpool, indoor pool, private spa suite, 3 relaxation rooms, treatments), medical center with 24-hour care, gym
- Own parking spaces (underground car park)
- Air conditioned rooms



Berneggstraße 2
CH-9000 St. Gallen

Einstein St.Gallen

The Einstein in the heart of St.Gallen is the perfect place to enjoy a delicious meal, celebrate, meet with business partners and feel right at home in the hotel and wellness area.

- 113 rooms and suites
- Restaurant, house bar
- Library, smoking lounge
- Spa & fitness area
- Own parking spaces in a garage with e-charging station
- Bus parking lot



Wiesenbachstrasse 5
CH-9030 Abtwil/St. Gallen

Hotel Säntispark

The seminar hotel Säntispark is only five minutes away from the city center of St. Gallen and has the most modern infrastructure for seminars and events. It is also ideal for excursions in the surrounding area - Lake Constance, mountains, hiking tours or historic towns.

- 136 double rooms
- Restaurant (modern, typical with Italian influence) with terrace
- 9 conference rooms (max. 200 people)
- Spa, sports & sauna area in the adjacent Säntispark leisure center (saunas, steam rooms, whirlpool bath, salt water pool, water slides, fitness area, treatments), miniature golf, bowling
- Own parking spaces (parking garage)
- Air conditioned rooms

RESTAURANTS



Culinary diversity with regional characteristics

Anyone who travels and experiences a lot, will get hungry - and the rich selection of our local produce will satisfy any appetite. The cuisine of the four-country region is truly international - but with traditional and modern interpretations.

The variety of food and drink reflects the abundance of nature: the lake itself is home to many different species of fish, cows graze on lush green pastures of the local hills, and vitamins ripen in their most beautiful form in the orchards. Much of what comes to the table here is the tasty end product of successful local harvests.

Even if some of the restaurants appear old and traditional, behind the historic walls there are professional chefs at work, who

conjure up contemporary and high-quality food for the table. You, too, can indulge in this abundance during your stay!

High quality cuisine, stylish ambience, pleasurable moments: We'll take care of it.



YachtHotel Helvetia – Swiss Restaurant

Inselgraben 3 | D-88131 Lindau (island)

- 45 indoor seats, 200 outdoor seats (terrace and harbor lounge)
- Regional, organic, fish specialities and wines from Lake Constance
- Hotel directly connected (42 rooms, see p. 26)

The Swiss Lifestyle Restaurant not only impresses with its elegant, high-quality design concept, but also with its front-row location on Lindau harbor..



Cantinetta Al Lago

Chelles-Allee 1 | D-88131 Lindau (island)

- 45 indoor seats, 140 outdoor seats
- Pasta, pizza, fish and meat dishes
- Terrace directly by the lake, adjacent to the Bavarian casino

This Italian restaurant offers a mixture of traditional and modern Mediterranean cuisine and a great view of the lake.



Gasthof Engel

Schafgasse 4 | D-88131 Lindau (island)

- 50 indoor seats, 30 outdoor seats
- Regional, Swabian, Bavarian, fish specialities from Lake Constance
- Hotel directly connected (10 rooms)

Traditional dishes and locally-brewed beers are served in this listed, lavishly renovated house.



Restaurant Hotel Bayerischer Hof

Seepromenade / Bahnhofplatz 2 | D-88131 Lindau (island)

- 250 indoor seats (distributed over 4 rooms)
- Regional, international, fish specialities from Lake Constance
- Hotel directly connected (104 rooms, see p. 27)

In the stylish hotel-restaurant with a direct view of the harbor you will be spoiled with a combination of regional and international specialities.



Restaurant Reutemann

Seepromenade/Ludwigstraße 23 | D-88131 Lindau (island)

- 78 indoor seats, 216 outdoor seats
- Regional, international, fish specialities from Lake Constance
- Large outdoor area on the harbor promenade and lake
- Hotel directly connected (62 rooms, see p. 27)

This cosy hotel-restaurant offers selected regional and international specialities and a view of the Lindau waterfront.



Gasthof Alte Post

Fischergasse 3 | D-88131 Lindau (island)

- 75 indoor seats, 110 outdoor seats
- Cuisine from Styria region of Austria as well as local Swabian specialities
- Hotel directly connected (11 rooms: 2 single rooms, 9 double rooms)

In this cosy, traditionally furnished restaurant, a classic tavern culture is alive and well - a pleasant haven of peace and an escape from the sometimes hectic day-to-day. A cosy spot in one of the most beautiful places on Lindau island.



Restaurant Strandhaus Lindau

Fraunhoferstraße 20 | D-88131 Lindau (mainland)

- 90 indoor seats, 60 outdoor seats
- Grill-Restaurant and barbecue specialities from the wood-fired BBQ-Smoker
- Beer garden with heatable pagoda tents

STRANDHAUS uses only regional meat from Lake Constance and the Allgäu. All dishes, sauces etc. are homemade according to our own recipes. Highlight is the real barbecue from the wood oven with cooking times of up to 12 hours.



Wissinger's im Schlechterbräu

In der Grub 28 | D-88131 Lindau (island)

- 90 indoor seats, 120 outdoor seats
- Regional, German, modern
- Spacious beer garden under the chestnut tree

The walls of the restaurant date back to the 14th century - providing a contrast between the modern interior of the inn and its fresh, regional cuisine.



Restaurant im Lindauer Hof

Dammgasse 2 | D-88131 Lindau (island)

- 102 indoor seats, 190 outdoor seats
- Regional, international, fish specialities from Lake Constance
- Sun room with a view over the harbor
- Hotel directly connected (36 rooms, see p. 26)

The hotel restaurant's imaginative culinary creations and the chef's love of Lake Constance fish are known beyond the city limits.



Wirtshaus zum Sünfzen

Maximilianstraße 1 | D-88131 Lindau (island)

- 130 indoor seats
- Swabian, Bavarian, fish specialities from Lake Constance
- Outdoor area directly in pedestrian zone

This traditional inn is located directly in the lively Maximilianstraße and displays a successful combination of tradition and modernity in the architecture and cuisine.



Eilguthalle Lindau

Schützingerweg 2 | D-88131 Lindau (island)

- Up to 300 indoor seats, approx. 250 outdoor seats in the beer garden
- Regional, international, seasonal, modern
- Exclusive rental, sun room, roof and outdoor terrace, beer garden directly at the lake

This event location right on the harbor front offers upmarket cuisine in a modern, stylish ambience. The large collection of vintage cars on display in the restaurant also provides an attractivetalking-point for the guests.



Café Konditorei Ebner

Friedrichshafener Straße 19 | D-88131 Lindau (mainland)

- 50 indoor seats
- Homemade cakes, pastries and tarts, chocolate, pralinés
- Hotel directly connected (19 rooms)

The products, made with carefully-selected ingredients, can be enjoyed in the cosy café or on one of the two sun terraces.

FRIEDRICHSHAFEN



Theater-Café Konditorei Lindau

Linggstraße 6 | D-88131 Lindau (island)

- 64 indoor seats, 66 outdoor seats
- Homemade cakes, pastries and tarts, chocolate, pralinés, ice cream specialities
- Lunch

Freshly prepared delicacies, made from the best regional raw ingredients, are served in a stylish, classic café ambience.



Restaurant im Zeppelin Hangar

Messestraße 134 | D-88046 Friedrichshafen

- 165 indoor seats, 150 outdoor seats
- Regional cuisine
- Direct view of the Zeppelin airships during take-offs and landings, can be combined with a Zeppelin flight or hangar tour

The spacious, modern restaurant offers excellent cuisine. Here elegant architecture meets stylish ambience.

INSEL MAINAU



Restaurant Schwedenschänke

Mainau GmbH | D-78465 Insel Mainau

- 200 indoor seats
- International, Swedish, from the Baden area, vegan, seasonal, fish specialities from Lake Constance
- Centrally located on the flower island, spacious terrace

The traditional Swedish country house style restaurant offers fast and inexpensive cuisine during the day and refined and elegant dining in the evening.



Restaurant Comturey

Mainau GmbH D-78465 Insel Mainau

- 90 indoor seats
- Organic, regional, seasonal
- Centrally located on the flower island at the harbour, terrace

Young, authentic, regional - Lake Constance cuisine with a modern flair. The Comturey is part of the harbour area which unites the many architectural styles of the Mainau: the Comturey tower from the 13th century, the view of the baroque castle from the 18th century, the harbour house from the 19th century and the palm house from 1998.

CONSTANCE



Restaurant Konzil Constance

Hafenstraße 2 | D-78462 Konstanz

- Downstairs 200 indoor seats, upstairs 100 - 800 indoor seats
- Specialities from the Baden area as well as fish from Lake Constance
- Event terrace with lake view, directly at the harbor

The Konzil restaurant has always been a place for meetings and delicious cuisine. In the selection of products, the focus is on the sustainable development of the Lake Constance region.



LOCHAU/BREGENZ



Restaurant Berghaus Pfänder

Pfänder 1 | A-6911 Lochau

- 250 indoor seats, 140 outdoor seats
- Austrian, rustic
- Opening hours: May to end of September
- Located adjacent to the Pfänderbahn cable car station, with a view of Lake Constance and the mountains

This rustic self-service restaurant offers a panoramic view as well as various lunch menus, hearty snacks and delicacies from the in-house pastry shop.

Restaurant Pfänderdohle

Pfänder 1 | A-6911 Lochau

- 130 indoor seats, 100 outdoor seats
- Austrian, rustic
- Opening hours: End of September to beginning of May
- outdoor seating with mountain view

This cosy alpine guesthouse serves hearty home-style cooking and homemade cakes. Traditional mountain-chalet evenings, with local music and cuisine, are also held regularly.

STEIN



Restaurant Appenzeller Schaukäserei

Dorf 711 | CH-9063 Stein

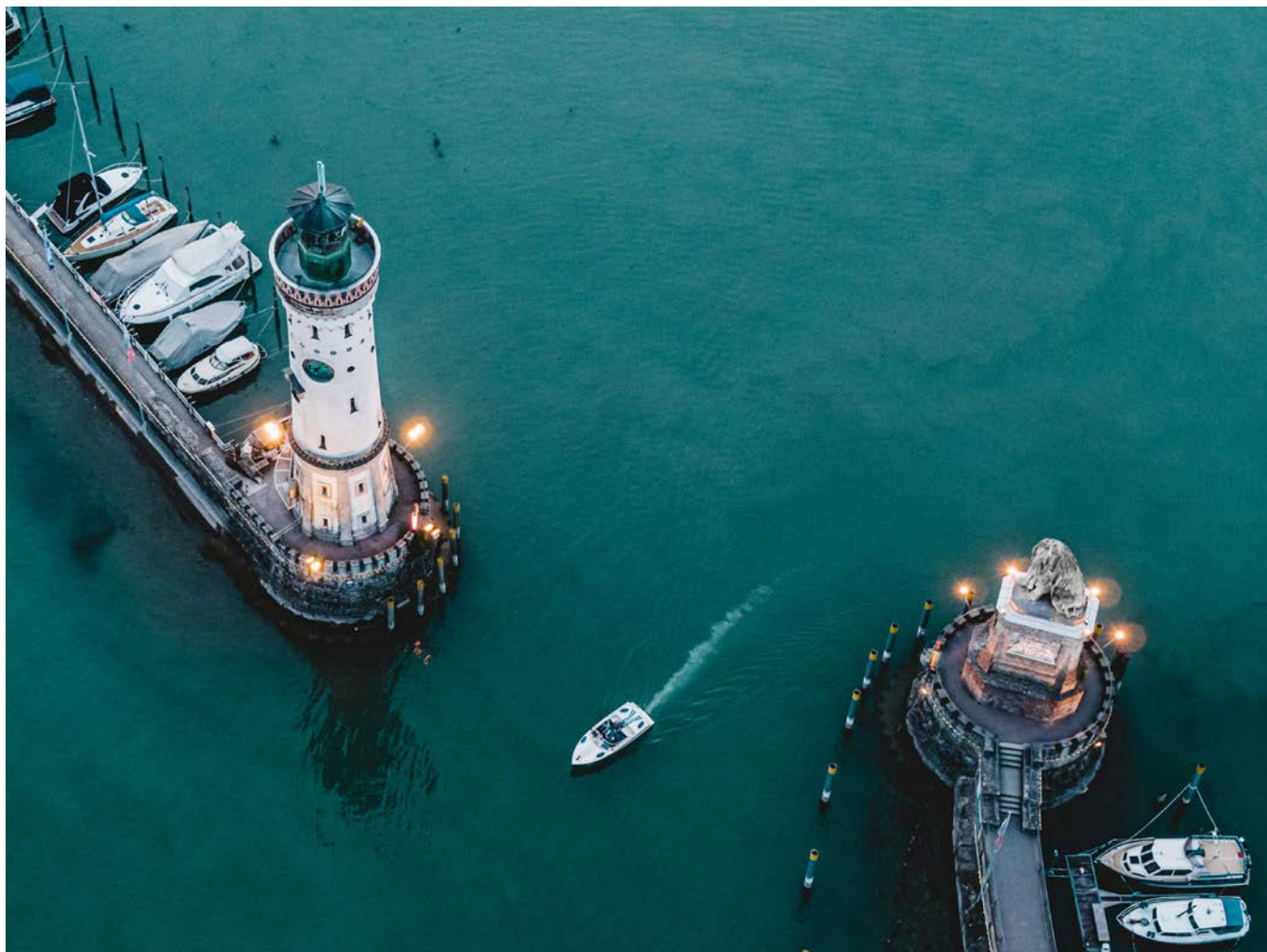
- 140 indoor seats (spread over 3 rooms), 90 outdoor seats
- This restaurant specialises in Appenzeller cheese and regional specialities
- Appenzeller Fondue cooking course

Hot food is on offer throughout the day in a traditional and cosy atmosphere.



SUPPORTING PROGRAM

Lindau harbor entrance



This selection of events will inspire you

In a nutshell, there are virtually no limits when it comes to the choice of activities in the four-country region. It's entirely up to you whether you prefer excitement, sport oder spectacle.

Enjoy a flight with the Zeppelin or a trip on an event ship. Discover picturesque places or pulsating cities. Admire historical ruins and colourful gardens. Take a look behind the scenes of stages and workshops. Let your gaze wander over mountain peaks or vineyards. Experience exciting adventures at team-building events or joint excursions.

In short, you can select exactly those events that will inspire you and your guests, from the many extraordinary and unique

possibilities we have to offer.

Impressive experiences, unforgettable moments, lasting memories: We'll take care of them.



Bavarian Casino Lindau

Chelles-Allee 1 | D-88131 Lindau (Island)

- / Germany
- / Eat, Drink, Play
- / Indoors

With its prime location on the shores of the island, Spielbank Lindau welcomes its guests with a unique view over Lake Constance and the mountains. The modern, elegant round building offers space for a casino, a restaurant and a cabaret stage. You can play roulette, poker, blackjack and slot machines right on the shores of picturesque Lake Constance. Regular specials such as the ladies' night, the men's evening or special draws draws entice with special chances of winning and gifts. If you just want to get a taste of the casino without betting any money - that is also possible. There is no obligation to play.



Wine Tasting at Winery „Weingut Haug“

Kellereiweg 19 | D-88131 Lindau (mainland)

- / Germany
- / Culinary
- / Indoor

Each tasting focuses on four or six carefully selected favorite wines - from the current vintage to rarities from our treasure trove. In addition to tips for perfect wine enjoyment and background information about the wines presented, the themes of viticulture and the Bavarian wine-growing region of Lake Constance will be covered, as well as the Haug winery itself. This tasting, led by the winemakers themselves, is equally suitable for absolute beginners as well as experienced wine connoisseurs.

Wine Tasting „Die Kleine“ („The Short One“)

- From 10 people
- 20 € per person
- About one and a half hours
- German, English
- Tasting 4 different wines

Wine Tasting „Die Große“ („The Lang One“)

- From 10 people
- 25 € per person
- About two hours
- German, English
- Tasting 6 different wines

Optional

- Guided tour of the wine cellar or vineyards
- Simple snack
- Cheese fondue



Lake Constance Wine Experience

Marion Appel | Sonnenbichlstr. 55 | D-88149 Nonnenhorn

- / **Germany**
- / **Culinary**
- / **outdoors/ indoors on request**

Wine tastes like the landscape in which it is grown, influenced by the soil and the climate. You are invited to see, smell and taste and learn a lot about wine. Take a walk through our beautiful landscape and experience the history and stories of wine growing on the Bavarian shores of Lake Constance - not only through words but through sampling various varieties.

- We recommend you arrive by train (Nonnenhorn station)

Wine tasting in Nonnenhorn

- From 10 people
- 25 € per person (wine tasting with 4 wines, water and bread), 30 € per person incl. small cheese tasting
- About two hours
- German



Maestrani's Chocolarium

Toggenburgerstrasse 41 | CH-9230 Flawil bei St. Gallen

- / **Switzerland**
- / **Culinary**
- / **Indoors**

Chocolate makes you happy. But how does happiness get into chocolate? Join us on a sweet journey, gain insights into live production and test the latest creations. Snacking is welcome here!

- 6 free bus parking spaces directly in front of the building

Guided tour

- Groups of 10 to 30 people
- 14 CHF per person
- About one hour
- German, English
- Guided tour of the production area and tasting

Decorating your own chocolate bars

- No minimum number of participants
- 10 CHF per board
- About 20 minutes
- German, English
- Decorating your own chocolate bars incl. various toppings



Appenzeller Show Dairy

Dorf 711 | CH-9063 Stein AR

/ Switzerland

/ Culinary

/ Indoors

The Appenzeller Show Dairy takes you on a special kind of voyage of discovery: from the craftsmanship of cheese-making to the vastness and beauty of the Appenzellerland. Here, tradition and customs are still alive and well.

- Free bus parking directly in front of the building

Guided tours through the show dairy

- Max. 30 people per group (max. 2 groups at the same time)
- 150 CHF flat rate for small groups of up to 6 people, 180 CHF flat rate for groups from 7 to 15 people, 12 CHF per person for groups of 16 to 40 people, 11 CHF per person for groups from 41 people
- About one hour
- German, English
- Demonstration, with a view of the production area and cheese cellar, holding up to 12,500 blocks of cheese

Appenzell cheese tasting

- minimum 10 persons
- 10,50 CHF per person
- At least 30 minutes
- German, English, French
- Tasting of 5 types of Appenzeller® cheese with bread

Appenzeller Vesper plate

- minimum 10 persons
- 18 CHF per person
- At least 30 minutes
- German, English, French
- Tasting of Appenzeller® cheese and regional meat specialities and bread

Appenzeller beer meets Appenzeller® cheese

- From 6 persons
- From 45 CHF per person
- About 1 hour
- German, English, French
- Tasting of Appenzeller® cheese and regional beer

Appenzeller Fondue cooking course

- From 6 persons
- From 37 CHF per person
- Approx. 45 minutes (plus mealtime)
- German, English, French
- Compilation of your own fondue mixture at the cheese counter, cooking of a cheese fondue under the supervision of an expert hostess.

Price information without guarantee, further group offers and prices on request



Bikeschool

Rickenbacherstr. 64 c | D-88131 Lindau (mainland)

- / Germany
- / Fun & Action
- / Outdoors

You have more fun mountain biking when you know how to sit safely and fearlessly in the saddle! Every mountain biker strives to become better - no matter what level he or she is at. On this tour, you gain valuable knowledge and practical experience! More tours on request.

Guided e-bike tours (sightseeing)

- Groups of 2 to 20 people
- from 79 € per person (min. 12 people), prices for small groups on request
- About four hours
- German, English
- Relaxed ride through the hilly surroundings of Lindau. (Helmets are mandatory, these can be rented)

Guided E-Bike Tour from / to Scheidegg

- Groups of 2 to 20 people
- 90 € per person (min. 12 people)
- About four hours
- German, English
- Finish with ascent - the view is always directed towards Lake Constance, the tour leads along the border area between Germany and Austria. (Helmets are compulsory, these can be rented)



Allgäu Events

Samuel-Bachmann-Str. 1 | D-87527 Sonthofen im Allgäu

- / Germany or flexible location
- / Fun & Action / Teambuilding
- / Indoors and outdoors

Allgäu Events offers a variety of activities where communication, coordination and cohesion are important. Many of the events can be held outdoors - fresh air, fascinating nature and fantastic views of the Allgäu are free of charge. That way teambuilding is fun! Further activities on request.

Big chain reaction

- Groups of 10 to 500 people
- From 89 € per person, plus location costs
- About three to five hours
- German, English
- Teambuilding at several stations, where solutions are constructed from building materials, where joint decisions, coordination and some craftsmanship are required. Transfer points between the stations are group-wide
- Goals: optimizing interfaces, strengthening communication, developing strategies together
- Both outdoor and indoor possible

Mobile Mission Box

- Groups of 2 to 500 people
- From 49 € per person, plus location costs
- About one and a half hours
- German, English
- Game against time, in which a team (max. 6 people) has to pick locks, answer questions and solve secrets. Only when all the teams have been successful can the master box be opened
- Flexible use at different locations, the branding & story can be individually adapted to your company, suitable as break-out during a conference
- Goals: To promote communication, recognize strengths, encourage efficient decision-making and achieve targets as a team
- Both outdoor and indoor possible



Short Film Challenge

- Groups from 10 to 500 people
- From 89 € per person, plus location costs
- Between two and five hours
- German, English
- Each team receives a variable script with three different story options and films the scenes with a HD camera. Each participant has to appear as an actor at least once. Film editing is then done by Allgäu Events, followed by a film premiere in a cinema, accompanied by popcorn and drinks.
- Goals: to encourage communication & creativity, recognize strengths, participants' own initiative, achieve goals as a team, make messages visible, enthusiasm, fun and entertainment
- Both outdoor and indoor possible



Teambuilding

Stad Unique | Secretarislaan24 | NL-3971 CM Driebergen

/ Fun & Action / Teambuilding

/ Indoors and outdoors

Real success at these events can only be celebrated as a team: The Stad Unique' offers include scavenger hunts and city rallies, which are suitable for teambuilding days, company outings or summer and Christmas parties.

- max. 6 people per team
- From 69 € per team
- From one and a half hours
- German, English,

Europe Game Lindau

In this game, the teams set off in search of various photo spots to take a group selfie. At each photo location, they are given a task or a question relating to the topic of Europe. The aim of the game is to find the solution word.

Murder Game Lindau

There's been a murder and the police are tearing their hair out! Can you solve the murder case? With the help of photos and a city map, you set off in search of different photo locations to take a group selfie there.

Escape the City

In Escape the City, the starting point is known. With the help of exciting puzzles, you have to find the right way through the city to reach your destination. On your interactive discovery tour you playfully reach the most beautiful places in the city.



Lake Constance Navigation

Bodensee-Schiffsbetriebe GmbH | Hafenstrasse 6 | D-78462 Konstanz

- / **Germany, Austria, Switzerland**
- / **Excursions and round trips**
- / **Outdoors**

The Lake Constance Navigation have 13 large and small passenger ships, which are suitable for a charter for groups of 2 to 500 people. The prices are calculated individually on request. The variety of offers includes round trips along impressive shorelines, adventure trips to popular destinations in the region as well as various pleasure cruises with culinary highlights. Classic round trips, for example, are offered from 9.80 € per person. (Advice available in German and English).

Exclusive charter cruises

MS Graf Zeppelin

- A total of 492 interior seats on 2 decks, largest interior offers up to 240 seats
- Price/Duration on request
- Flagship of the charter fleet
- Zeppelin bar in the upper deck bow with air conditioning, large sun deck, elevator available, integrated beamer & screen
- Year of construction 1989

MS Lindau

- A total of 224 interior seats on 2 decks, the largest interior offers up to 100 seats
- Price/Duration on request
- Gallery ship with bright, light-flooded rooms
- Large covered outdoor area, bow bar on upper deck with panoramic view, stair lift available
- Year of construction 2006

Group tours with lake view

For groups of 10 people or more, the group rates of the regular passenger ferry service offer a great way to travel between the lakeside towns of Lake Constance. Please book in advance.

Group tickets for ship experiences

- Regular service
- Round trips
- Culinary ship tours
- Festivals and fireworks
- Bregenz Festival shuttle service
- Cycling and hiking tours
- Winter trips

Example of a round trip

"Panorama Trip" with MS Bavaria

- Large interior with seating for up to 116 people
- Large open deck with 120 outside seats, of which approx. 40 seats are covered
- Price: from 16.20 € per person (Coffee and cake offer: price and booking on request)
- Duration: one and a half hours
- Start and end of the round trip: Lindau Spielbank (Casino)
- Course of the tour: the bay of Bregenz - with a view of the Pfänder mountain ridge, Bregenz Festival floating stage, Mehrerau monastery, followed by the bay of Schachen and Lindau island
- Built in 1988 and part of the Lake Constance Navigation fleet since 2020



Vorarlberg Lines

Seestraße 47 | A-6900 Bregenz

/ Austria, Germany, Switzerland

/ Excursions and round trips

/ Outdoors

The Vorarlberg Lines has 6 passenger ships: the MS Sonnenkönigin, MS Vorarlberg, MS Austria, MS Alpenstadt Bludenz, MS Stadt Bregenz and MS Montafon. All ships can be chartered. The prices are calculated individually on request.

MS Austria

- Space for up to 1,200 passengers, 400 banquet seats, 396 indoor seats
- Price on request
- Duration on request
- German, English on request
- Largest and fastest ship on Lake Constance, suitable for music and dance, company presentations etc.
- 5 salons, open deck with bar and awning, ship is accessible from all sides on the mezzanine and main deck, individual seating according to customer requirements
- WC wheelchair accessible
- Catering partner is the team from PIER69-On Board

MS Vorarlberg

- Space for up to 1,000 passengers, 410 banquet seats, 398 indoor seats
- Price on request
- Duration on request
- German, English on request
- Longest passenger ship on Lake Constance, popular for dance and party trips
- 5 salons, salon 2 well suited for lectures - holds up to 126 people, salon 4 can be converted into a dance salon and offers a connection to the large open deck
- WC wheelchair accessible
- Catering partner is the team from PIER69-On Board

MS Sonnenkönigin

- Space for up to 1,000 passengers, seats on request (individual seating)
- Price on request
- Duration on request
- German, English on request
- The most modern passenger ship on Lake Constance, meets even the highest demands for interior design and event technology. Particularly suitable for events. Decoration and furniture can be adapted for any occasion.
- 3 decks, 1 hall, large sun deck
- Passenger lift, wheelchair accessible
- Catering partner is the team of MO-Catering

MS Stadt Bregenz

- Space for up to 300 passengers, 210 banquet seats, 202 indoor seats
- Price on request
- Duration on request
- German, English on request
- Medium-sized ship with a homely, traditional flair, popular for weddings, company events, presentations, seminars, private Oktoberfest etc.
- 2 salons, terrace-like open deck
- WC wheelchair accessible
- Catering partner is the team from PIER69-On Board

MS Alpenstadt Bludenz

- Space for up to 250 passengers, 96 banquet seats, 128 indoor seats
- Price on request
- Duration on request
- German, English on request
- 2-deck motor ship, modern, stylish event location, lounge atmosphere on the upper deck, covered open deck with a mix of bar tables and seating
- Decoration and furniture adaptable for every occasion (mobile bar etc.)
- 2 salons
- WC wheelchair accessible
- Catering partner is the team from PIER69-On Board



Swiss Navigation Lake Constance

Friedrichshafenerstraße 55 | CH-8590 Romanshorn

- / Austria, Germany, Switzerland
- / Excursions and round trips
- / Outdoors

You can experience the diverse landscape and the gastronomic delights on a trip with the scheduled boats or on an exclusive event or charter cruise. The ships can accommodate up to 700 people and have different capacities inside and outside. The prices are calculated individually on request. Classical round trips for groups are offered from 6 € per person.

Exclusive charter trips

MS St. Gallen

- Space for up to 650 passengers, 240 inside seats, approx. 400 outside seats
- From 6.000 CHF
- Duration: minimum of two hours, departing from Romanshorn (Switzerland)
- German, English on request
- 2 spacious halls, panorama windows
- Used for courses, themes and charter trips

MS Zürich

- Space for up to 500 passengers, 160 inside seats
- From 3.600 CHF
- Duration: minimum of two hours, departing from Romanshorn (Switzerland)
- German, English on request
- Traditional ship, 85 years old, in service during the high season between Romanshorn and the flower island Mainau, Meersburg and Lindau, icecream parlour on board

MS Thurgau

- Space for up to 500 passengers, 180 inside seats
- From 3.600 CHF
- Duration: minimum of two hours, departing from Romanshorn (Switzerland)
- German, English on request
- This is a vintage ship - 86 years old - full of old-fashioned nautic flair.
- Regularly used on daily passenger ferry services, and also very popular for charter trips for up to 180 passengers

MS Säntis

- Space for up to 180 passengers, 110 inside seats
- Price on request
- Duration on request
- German, English on request
- Upper deck with bar and lounge, outer deck with awning
- For occasions such as employee parties, company events or anniversary celebrations, from aperitifs to buffet and gala menus

MS Rhynegg

- Space for up to 300 passengers, 112 inside seats
- From 2.300 CHF
- Duration: minimum of two hours, departing from Rorschach (Switzerland)
- German, English on request
- Often booked for corporate events, birthdays and weddings
- Operates daily during the main season, on the old Rhine river, bookable as charter

MS Rhyspitz

- Space for up to 150 passengers, 50 inside seats
- From 1.400 CHF
- Duration: minimum of two hours, departing from Romanshorn (Switzerland)
- German, English on request
- A sleek ship with nautical flair, especially popular for aperitifs and small parties



MS Alte Rhy

- Space for up to 60 passengers, 36 inside seats
- From 1.050 CHF
- From 2 hours from Rorschach (for charter trips the duration can be individually determined, min. 2 hours)
- German, English on request
- Suitable for small-scale events, access to the ship through the wheelhouse, proximity to the captain also during the trip

MF Euregia

- Space for up to 700 passengers, 250 inside seats
- From 6.800 CHF
- Duration: minimum of two hours, departing from Romanshorn (Switzerland) oder Friedrichshafen (Germany)
- German, English on request
- The youngest ship in the fleet, used for transportation to Friedrichshafen and back as well as for excursion tourism and party & charter trips of all kinds

MF Romanshorn

- Space for up to 560 passengers, 100 inside seats
- From 5.650 CHF
- Duration: minimum of two hours, departing from Romanshorn (Switzerland)
- German, English on request
- This ship is regularly used on the 41-minute crossing between Romanshorn and Friedrichshafen (the widest point of Lake Constance).



Lake Constance Historical Navigation

Historische Schifffahrt Bodensee | Hafestraße 15 | A-6971 Hard

/ Germany, Austria, Switzerland

/ Excursions and round trips

/ Outdoor

With the steamboat Hohentwiel (1913) and the motor ship Oesterreich (1928), the Historische Schifffahrt Bodensee has two real jewels in its fleet: the ships were restored with love for detail over many years and convey the flair of long gone times, combined with today's comfort. Regular cruises such as the Kaiserfahrt, the Wiener Frühstückssalon or Jazz Brunch are offered from 38 € per person. On both ships various theme cruises take place - group prices, duration and themes on request.

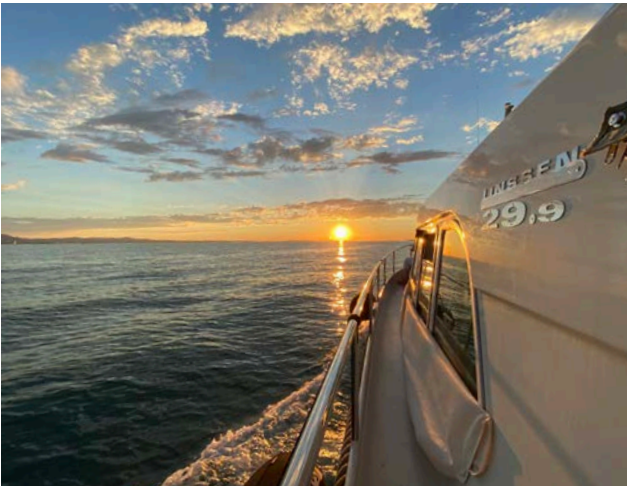
Exclusive charter trips

Hohentwiel

- Space for up to 135 passengers (on the open deck or in the salons, depending on the weather)
- Price on request
- Duration on request
- German, English on request
- In operation between the end of April and mid October
- Historical art nouveau paddle steamer, for over 100 years in service
- WC wheelchair accessible

Austria

- Space for up to 140 passengers (on the open deck or in the salons, depending on the weather)
- Price on request
- Duration on request
- In operation all year round
- Conveys the flair and luxury of the Art-déco era
- WC wheelchair accessible



Private Yacht Charter STRANDHAUS

STRANDHAUS LINDAU | Fraunhoferstraße 20 | D-88131 Lindau

- / **Germany, Austria, Switzerland**
- / **Excursions and round trips**
- / **Outdoors**

Enjoy gourmet delights with 2 to 6 people along the Bavarian shore of Lake Constance on board the motor yacht STRANDHAUS. The two-man crew of the M/Y STRANDHAUS will serve you culinary delicacies while you enjoy the peace and quiet and the view of the water. Of course there will also be swimming stops.

Snack & Chill Cruise

- 2 – 6 people
- 475 € for 2 people including finger food and all drinks, each additional person (up to a maximum of 8 people): 45 €
- Duration: one and a half hours
- German, English
- Route: Bavarian shore around Lindau, around the western edge, or the bay of Bregenz

Afternoon tour, easy to integrate after a meeting or conference
Small snacks, Secco and soft drinks with service (2 man crew), bathing stop on request

Lindau Breakfast Cruise or Sunset Cruise

- 2 – 6 people
- 590€ for 2 people including all food & drinks, each additional person (up to a maximum of 8 people): 50 €
- Duration: two hours
- German, English
- Starting point is the Lindau harbor or the Nobel Prize winner pier (if the water level is appropriate)
- Route: Lindau - Nonnenhorn - Wasserburg - villas of the bay of Schachen to the western edge of Lindau island
- Morning tour: breakfast with selected specialities from the Lake Constance and Allgäu region; evening tour: multi-course Captain's Dinner. Both tours include drinks (Secco, wine, soft drinks, coffee specialities)

Grand Sunset Cruise

- 2 – 6 people
- 750 € for 2 people including all food & drinks, each additional person (up to a maximum of 8 people): 75 €

- Duration: three and a half hours
- German, English
- Culinary delight trip to the most beautiful places on the Obersee
- Route: Lindau - Bregenz - New Rhine - Wasserburg - Bad Schachen - Lindau
- Multi-course Captain's Dinner with first-class service from the two-man crew, bathing stop on request

Grand Tour „Old Rhine“

- 2 – 6 people
- 750 € for 2 people including Captain's Dinner and all drinks, each additional person (up to a maximum of 8 persons): 75 €
- Duration: three and a half hours
- German, English
- Trip to the „Alter Rhein“ area, a wonderful natural paradise with countless water birds and lots of peace and quiet on the river course of the historic border between Austria and Switzerland
- Multi-course Captain's Dinner with first-class service from the two-man crew

Grand Lake Tour from Lindau to Constance

- 2 – 6 people
- 1,500 € for 2 people incl. premium breakfast, captain's lunch, all drinks and return journey back to Lindau by other transport methods - see below, each additional person (up to a maximum of 8 people): 120 €
- Duration: five hours
- German, English
- Drive from Lindau to Constance, along beautiful bays, sights and historic buildings on the German and Swiss side
- Extensive breakfast with selected, regional specialities as well as a small captain's lunch with finger food at lunchtime, on request bathing stops at the end of the trip in Constance (near Konzil), return trip to Lindau individually (scheduled boat, catamaran, train, etc.), if you wish to return to Lindau on board the M/Y STRANDHAUS, the port time in Constance is charged at 60 € per hour



Garden Monument Lindenhofpark

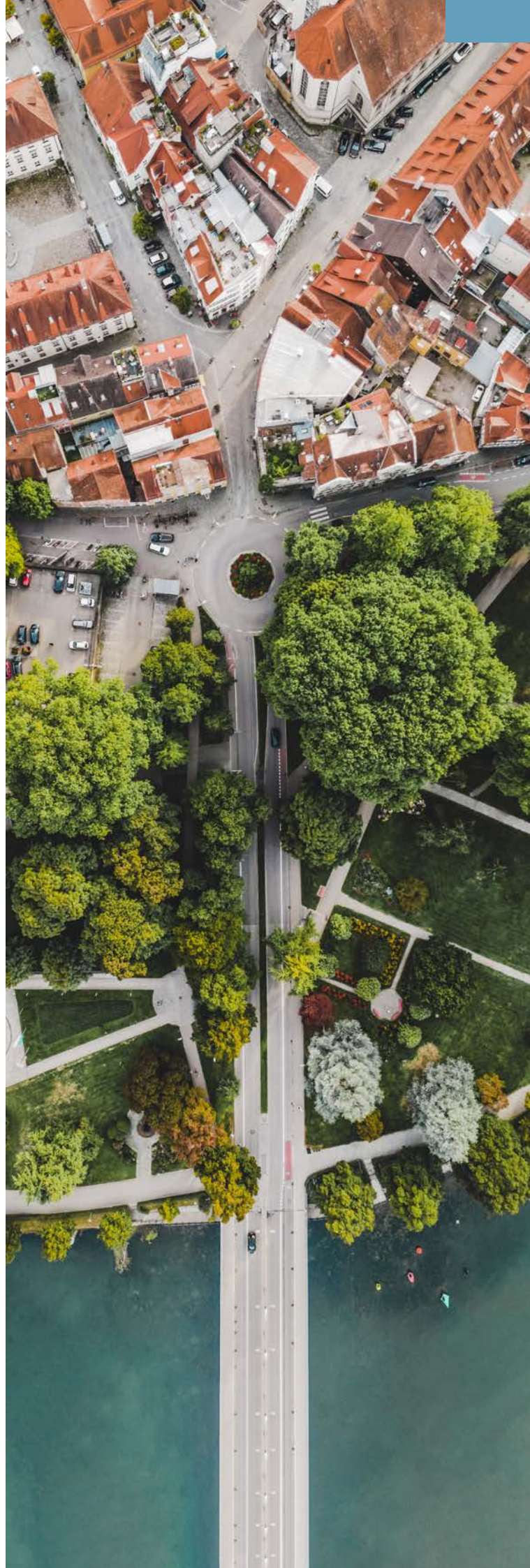
Lindenhofweg 19 | D-88131 Lindau (mainland)

- / Germany
- / Gardens and nature
- / Outdoors

The Lindenhof is the most important park on the banks of the Lindau shoreline and is described as one of the first constructions along the Lindau villa-belt. The roots of the extensive area on the lakeside in Bad Schachen date back to the middle of the 19th century. You will learn interesting background information and details during a guided tour.

Guided tour through the garden monument Lindenhofpark

- 10 – 30 people per group
- 90 € per group
- 1 hour
- German, English





Mainau island

Mainau GmbH | D-78465 Insel Mainau

- / **Germany**
- / **Gardens and nature**
- / **Outdoors**

Tulips in spring, roses in summer and dahlias in autumn: in addition to these seasonal flower highlights, Mainau Island offers a wide range of attractions and nature experiences on Lake Constance. The island with its parks and gardens is open all year round from sunrise to sunset. Further offers and guided tours on request.

- Free coach parking is available on the nearby mainland

The best of Mainau island

- 10 - 25 people per group
- 120 € plus admission fee of 22 € per person
- One and a half hours
- German, English, French, Italian, Spanish, Swedish, Chinese, Japanese
- Multifaceted tour of the island with background information on history, botany, interesting facts about Mainau Island and the work of the Bernadotte family

From bank to bank

- 10 - 25 people per group
- 150 € plus 22 € per person (entrance fee)
- One and a half hours
- German, English, French (other languages on request)
- Guided tour for people with walking difficulties
- Listen to exciting stories like in childhood.

Nature meets art

- 10 - 25 people per group
- 150 € plus admission fee of 22 € per person
- One and a half hours
- German, English, French (other languages on request)
- Tour of the art treasures of Mainau - approx. 30 sculptures made of bronze, marble and steel



Plant treasures of Mainau

- 10 - 25 people per group
- 150 € plus admission fee of 22 € per person
- One and a half hours
- German, English, French (other languages on request)
- Botanical treasures in the change of seasons, blossom heads, old trees in the park, beauty of the gardens and their secrets and stories.

Green Princes at Lake Constance - Mainau through the ages

- 10 - 25 people per group
- 150 € plus admission fee of 22 € per person
- One and a half hours
- German, English, French (other languages on request)
- Time travel into the varied past of Mainau island: information concentrating on the beginning of the 19th century, when Mainau was owned by the Austro-Hungarian Prince Nikolaus Esterházy

Learning from the professionals

- 10 - 25 people per group
- 180 € plus admission fee of 22 € per person
- One and a half hours
- German, English, French (other languages on request)
- Specialist gardening tours in the park on various seasonal gardening themes, for garden lovers, experts and all those simply interested in plants and garden themes

A look behind the scenes

- 10 - 25 people per group
- 170 € plus admission fee of 22 € per person
- One hour
- German, English, French (other languages on request)
- Professional gardening tour of the greenhouses used for cultivation on Mainau island with valuable tips on topics such as plant protection in the home and garden, propagation and fertilization of plants, etc.

Mainau Discovery Tour

Entertaining rally for adults

- 10 to 60 people
- 21 € per person/group min. 175 € plus 22 € entrance fee
- One and a half hours
- Varied island tour in small groups, two teams compete against each other and go on a journey of discovery with guides to various stations in the park, at the end a surprise awaits the fastest group

Guided tour along the wine trail and exclusive tasting of Mainau wine

- 10 - 20 people per group
- 20 € per person plus 22 € entrance fee
- One and a quarter hours
- German, English, French
- Tour of the Mainau vineyard along the wine trail with old country vines and current new varieties, interesting facts about viticulture on Lake Constance, its history on Mainau, different cultivation systems and sustainable methods of cultivation, exclusive tasting of the limited Mainau wine



Lindau Marionette Opera

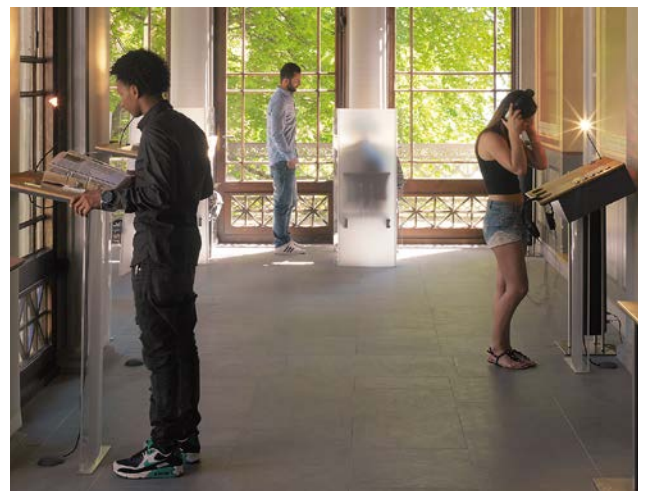
Fischergasse 37 | D-88131 Lindau (island)

- / Germany
- / Art and culture
- / Indoors

For over 20 years, the Marionette Opera has been showing fantastic productions with life-like puppets. After the short performance, you can take a look behind the scenes of the venue - which is, incidentally, Germany's only puppet theatre that only performs operas, operettas and a ballet piece.

Short performance & look behind the scenes

- Max. 50 persons
 - 400 €
 - About 60 minutes
 - German, English
 - Short performance of a piece from the repertoire (3 arias from the Magic Flute), guided tour behind the scenes
- Special performances are possible during the regular season and cost 2,400 € (98 seats), regardless of the piece being performed



Lindau Peace Museum

Lindenhofweg 25 | D-88131 Lindau – Bad Schachen (mainland)

- / Germany
- / Art and culture
- / Indoors

At Villa Lindenhof the theme of „peace“ is central - it can be experienced in a musical, artistic and interactive way. The „Decision Room“ is about „images of friends and enemies“. The listening stations in the conservatory deal with music and language. The workroom shows the successes of the peace movement.

- Opening hours: Mid April - mid October, Tue - Sat from 10am - 5pm, Sundays and public holidays 2pm - 5pm and by appointment

Guided tour of the museum

- Maximum group size: 20 people
- 15 € per person for guided tour, plus entrance fee of 2 € per person
- About 60 minutes
- German



Lindau Art Museum

Maximilianstraße 52 | D-88131 Lindau (island)

- / Germany
- / Art and culture
- / Indoors

The Lindau Art Museum presents changing art exhibitions every year from April to October - from Monet, Picasso and Warhol to Christo and Jeanne-Claude.

The Lindau Art Museum is dedicating its special exhibition in 2024 to Christo and Jeanne-Claude - A Life for Art. From April 13 to October 13, 2024, the museum will provide insights into the work and life's work of the artist couple with editions, drawings, collages and objects.

- Opening Hours: April to October, daily 10am - 6pm
- Admission: 10 € per person; discounts for families, school pupils, students, trainees
- Audio guide: German, English, 3,50 € per person
- The nearest bus parking lot is listed in the overview on page 11.
- Contact for inquiries: museum@kultur-lindau.de



Meersburg Castle

Schlossplatz 10 | D-88709 Meersburg am Bodensee

- / Germany
- / Art and culture
- / Indoors

High above Lake Constance rises „Die Meersburg“, in whose more than 30 furnished rooms the Middle Ages have been revived. The castle kitchen, armoury, knights' hall, castle dungeon, stable and torture chamber are just some of the rooms that can be visited. The striking building impresses guests of all ages.

- The bus car park is located at Allmendweg 45, from where you can also reach the old town on foot or, in the summer season, by shuttle bus. Opposite the Obertor, there is an embarkation and disembarkation point for coaches (direction of the ferry). From there it is only a few steps to the castle.

Opening hours: mid-March to October, 10am - 6.30pm, last admission 6pm / November to mid-March, 10am - 6pm, last admission 5:30pm (open daily throughout)

Tours & Guided tours

- Independent tour (March to October incl. themed tours).
- Special tours to the castle and the house of Annette von Droste-Hülshoff after written registration and confirmation
- Information on prices and events such as „Belebte Burg“ („Living Castle“), house concerts, literature events etc. can be found at www.burg-meersburg.de



Zeppelin Museum Friedrichshafen

Seestraße 22 | D-88045 Friedrichshafen

- / **Germany**
- / **Art and culture**
- / **Indoors**

With more than 1,500 original exhibits as well as historical sound, film and image recordings, the collection in the Zeppelin Museum tells the history of airship aviation, which is closely associated with Graf Zeppelin, in a lively and multimedia way.

- Coach parking at the city railway station (in front of the Seehotel), Friedrichsstraße
- Opening hours: May to October, daily 9am - 5pm / November to April, Tue - Sun 10am - 5pm

Technology and art at a glance

- Groups of 10 to 20 people
- From 80 € per group plus seasonal entrance fee from 10 € per person
- One and a half hours
- German, English, French, Italian, Spanish (foreign language for an extra charge)
- Guided tour through the areas of technology and art to the highlights of the two-part building with the world's largest collection of airship art and top-class art from the Lake Constance area

Zeppelin History

- Groups of 10 to 20 people
- From 80 € per group plus seasonal entrance fee from 10 € per person
- One and a half hours
- German, English, French, Italian, Spanish (foreign language for an extra charge)
- Guided tour focusing on the subject of airships in the context of technical and cultural history, tour of the museum, entrance to the reconstructed passenger compartments of LZ 129 Hindenburg, exploration of the Zeppelin

Art and architecture

- Groups of 10 to 20 people
- From 80 € per group plus seasonal entrance fee from 10 € per person
- One and a half hours
- German, English, French, Italian, Spanish (foreign language for an extra charge)
- Guided tour focusing on the special Bauhaus architecture of the Zeppelin Museum (former harbour station from the 1930s) and the modern design of the furniture and wall paintings in the „Hindenburg“, viewing of selected works from the art collection of the Zeppelin Museum

Guided tour through the respective temporary exhibition

- Groups of 10 to 20 people
- From 80 € per group plus seasonal entrance fee from 10 € per person
- One hour
- German, English, French, Italian, Spanish (foreign language for an extra charge)
- Guided tour of the current special exhibition on socially relevant issues, focusing on individual artists, technical developments or social topics

Bregenz Festival on the floating stage

Platz der Wiener Symphoniker 1 | A-6900 Bregenz

- / **Austria**
- / **Art and culture**
- / **Outdoors**



The Bregenz Festival is held every year in July and August; the opera performed changes every two years. The lavish stage sets and the creative productions on the world's largest lake stage are artistically highly demanding events, which are usually sold out quickly.

Visit to the Bregenz Festival - Performance

- No minimum number required
- From 35 € per person
- Two hours
- July / August 2024/2025: „Der Freischütz“ - romantic Opera in three acts by Carl Maria von Weber (1821)

Guided tour - a look behind the scenes

- Groups up to 25 people
- for 20 persons 160,00 €, each additional person 8,- €
- 40 minutes
- German, English
- Exciting journey into the heart of the theatre business with a look behind the scenes and information on the history and development of the Bregenz Festival

UNESCO Abbey Library of St. Gallen

Klosterhof 6D | CH-9000 St. Gallen

- / Switzerland
- / Art and culture
- / Indoors



The Abbey Library of St. Gallen is one of the largest and oldest monastic libraries in the world. Its valuable collection of books documents the development of European culture - numerous fundamental works of European intellectual history are kept here

Audio guide

- 5 CHF plus admission fee of 16 CHF per person (price applies for groups of 15 or more)
- Duration individual
- German, English, French, Italian
- Information on the Abbey library, vaulted cellar, cathedral, tour in and around the Abbey District, city tour

Guided tour 50 minutes

- Groups of 10 to 25 people
- 140 CHF per group plus admission fee of 16 CHF per person
- 50 minutes
- German, English, French, Italian
- Selection options: Abbey library, vaulted cellar, exhibition hall (1 module selectable)

Guided tour 90 minutes

- Groups of 10 to 25 people
- 190 CHF per group plus admission fee of 16 CHF per person
- 90 minutes
- German, English, French, Italian
- Selection options: Abbey library, vaulted cellar, exhibition hall, cathedral (2 modules selectable)

Zeppelin Flight and Hangar Tour

Deutsche Zeppelin-Reederei GmbH

Messestraße 132 | D-88046 Friedrichshafen

- / Germany
- / Typical Lake Constance



/ In- and Outdoors

The Zeppelin has fascinated people for generations. The 75-metre-long helium-filled airships travel at a height of 300 metres. Those who prefer to stay on the ground can learn all about the past and present of these giants of the air during a tour of the Zeppelin hangar..

- Coach parking spaces are located directly in front of the hangar
- Hangar visits and flights possible from mid-March to mid-November

Zeppelin flight

- Up to 14 people
- From 320 € per person
- From 30 minutes
- German, English
- Exclusive flight in a private atmosphere, with no other guests on board, flight route can be planned individually or selected from existing routes on Lake Constance. A visit to the hangar is possible before or after the flight

Tour of the Zeppelin hangar

- Max. 20 people per group
- 9.50 € per person (reductions possible); min. 125 € per group
- Approx. 45 minutes
- German, English, French, Italian, Spanish (foreign languages at an extra charge of 30 € per group)
- Several groups possible at the same time
- The hangar is one of the largest self-supporting halls in Southern Germany, professional hangar guides explain the fascinating world of the new generation of Zeppelins and explain the development and construction of this unique aircraft.

Combined offers: Hangar tour and drinks / food

Breakfast Package

- Group size: minimum of 20 people
- 22.70 € per person
- Approx. one hour guided tour of the Zeppelin hangar
- Breakfast in the Zeppelin hangar restaurant (sausage / cheese

/ jam or white sausage breakfast, unlimited coffee / tea for one hour)

Lunch Package

- Group size: minimum of 20 people
- 22.70 € per person
- Approx. one hour guided tour of the Zeppelin hangar
- Lunch including salad in the Zeppelin Hangar Restaurant

Afternoon package

- Group size: minimum of 20 people
- 15 € per person
- Approx. one hour guided tour of the Zeppelin hangar
- Coffee and cake in the Zeppelin hangar restaurant (1 piece of cake, unlimited coffee / tea for one hour)

Aperitif package

- Group size: minimum of 20 people
- 15.90 € per person
- Approx. one hour guided tour of the Zeppelin hangar
- Aperitif in the Zeppelin Hangar Restaurant (Secco rosé and white, orange juice, mineral water and snack)

Guided City Tours Lindau

Lindau Tourismus und Kongress GmbH
Alfred-Nobel-Platz 1 | D-88131 Lindau (island)

- / **Germany**
- / **Experience**
- / **Outdoors**



The best way to get to know the historic island town is during a guided tour of the town. With humour and knowledge, our city guides will accompany you on a journey through the history, culture and tradition of Lindau.

Guided tours of Lindau island

- Max. 25 people
- From 105 € per group
- One and a half hours
- German, English, French, Italian and Spanish
- Various topics: Classical city tour, Proverbs, Quiet corners, On the tracks of dear Augustin, Art and churches, Extravagant - women make history, The niece of the night watchman (costume tour), The wife of the Bavarian lighthouse keeper (costume tour), Fairytale hours

Guides City Tours Constance

Marketing & Tourismus Konstanz GmbH
Bahnhofplatz 43, D-78462 Konstanz

- / **Germany**
- / **Experience**



/ Outdoors

Informative, historical, popular: from the Konzil (council building) and the Imperia statue to the cathedral and the picturesque alleys of the Niederburg, you will get to know all the main sights of the city centre. Further guided tours on request.

City tour of Constance

- Max. 25 people per group
- 110 € per group up to 15 people; 120 € for 16 to 25 people
- One and a half hours
- German, English, French and Italian

Pfänder Cable Car

Pfänderbahn AG
Steinbruchgasse 4 | A-6900 Bregenz

- / **Austria**
- / **Typical Lake Constance**



/ Switzerland
/ Experience
/ Outdoors

The Hoher Kasten mountain in eastern Switzerland offers a breathtaking 360-degree view of the Appenzell mountains. With the cable car you can travel comfortably directly to 5,885 feet above sea level.

- The bus car park is only a few meters away from the valley station (parking free of charge)

Cable car ride

- Max. 50 people
- CHF 32.20 per person (group price from 20 persons)
- 8 minutes travel time
- Daily, trips every 20 minutes
- German, English, French
- Combi-ticket cable car incl. meal in the revolving restaurant possible (capacity revolving restaurant: 120 seats inside)
- Numerous hiking trails on the mountain, alpine garden, lookout points etc.

Principality of Liechtenstein

Städtle 39 | LIE-9490 Vaduz

/ Liechtenstein



/ Experience
/ Outdoors

At over 8,200 feet, the Säntis is the highest mountain in the Alpstein range, which is not only visible from afar due to its exposed position, but also offers fascinating views of six countries. A cable car takes you up to the Säntis summit from Schwägalp.

- A bus parking lot is located directly at the valley station
- From 10 people (per cabin max. 85 people)
- 10 - 19 people, 47 CHF per person
- 20 - 59 people, 42 CHF per person
- 60 - 99 people, 36 CHF per person
- 10 minutes travel time
- Daily
Travels every 30 minutes or on demand
- German, English
- Hotel (68 rooms), seminar rooms and catering directly connected



/ Switzerland
/ Experience
/ Outdoors

The cave chapel „Wildkirchli“ on Ebenalp, founded in 1621, has exerted a magical attraction on people for centuries. Today a modern cable car connection between Wasserauen (2,847 ft above sea level) and Ebenalp (5,393, ft above sea level) - a difference of 2,372 ft in altitude! - brings around 200,000 visitors a year to the mountain.

- Bus parking in Wasserauen 2 min. walk from the valley station (subject to charge)

Trip with the cable car

- From 10 people
- CHF 27 per person (up and down)
- 6 minutes travel time
- Daily (except April and November due to maintenance), trips every 15 minutes or as required
- German, English

Wildkirchli guided tours

- Max. 20 people
- CHF 210 per person (up and down)
- Between one and one and a half hours
- German, English
- Guided tour of the „Wildkirchli“ cave chapel with information on the history of Ebenalp, followed by a stop at the Aescher mountain inn.

Säntis Cable Car

Säntis-Schwebebahn AG

Hotel, Gastronomie, Events | CH-9107 Schwägalp Säntis

/ Switzerland



/ Outdoors

The unique panoramic view over the whole of Lake Constance and 240 Alpine peaks in Austria, Germany and Switzerland makes the Pfänder in Bregenz in Vorarlberg the most famous vantage point in the region. Seminars can also be held at an altitude of 3,490 feet (see Locations, p. 69).

Ascent / descent with the cable car

- Max. 80 people per ascent / descent
- From 15 € per person
(12 € per person by groups from 15 persons)
- 6 minutes travel time
- Daily from 8am to 7pm
- German, English
- Evening trips after 7pm on request for a fee
- Spacious cabins with panoramic windows
- Numerous hiking trails on the mountain, lookout points, Alpine wildlife park (open all year round, free admission)

Hoher Kasten Cable Car

Hoher Kasten Drehrestaurant und Seilbahn AG
Dorf 22 | CH-9058 Brülisau



/ Experience / Outdoors

The Principality of Liechtenstein is the sixth smallest country in the world with a length of only 15.5 miles. Its medieval castles, picturesque Alpine landscapes and traditional villages make it a popular destination for excursions. The capital Vaduz is a centre of culture and finance.

Experience Vaduz

- group size: 15 to 20 people
- 2 hours tour, 230 CHF per group
3 hours tour, 295 CHF per group
- German, English, French, Italian, Spanish, Russian, Chinese, Japanese
- Includes guided tour with information on the country, the Prince's House, historical and current events (approx. 2 hours), ride on the Citytrain Vaduz (approx. 40 minutes, plus 8 CHF per person), visit at the museum „Schatzkammer Liechtenstein“ („Treasure Chest of Liechtenstein“; approx. 20 minutes, plus CHF 5 per person), souvenir stamp for the passport (plus 3 CHF).

Ebenalp Cable Car

Luftseilbahn Wasserauen-Ebenalp AG
Schwendetalstrasse 82 | CH-9057 Wasserauen



LOCATIONS

Inselhalle Lindau



Multifaceted events in a stylish ambience

A good event location not only impresses through its optimal location and suitable rooms, but often also through that „certain something“. We work together with our partners to offer just that. Thanks to our international network, we can provide you with the addresses that are best suited to your individual requirements.

Would you like to celebrate something in a small, exclusive setting? Or organise a large conference with several hundred participants? Do you need ultra-modern event technology, or are the natural surroundings with a view of the lake and mountains more important to you? Often we can even offer both!

In addition to the stationary locations, the ships on Lake Constance are also perfectly suited as locations - many of which can be chartered.

Benefit from our local knowledge and get comprehensive advice.

Exclusive locations, uncomplicated organization, comprehensive support: we'll take care of it.



Zwanzigerstraße 10
88131 D-Lindau (island)

Inselhalle Lindau

The Inselhalle Lindau was modernised and generously extended by April 2018. With its modular room concept, this congress and event location offers a great deal of flexibility in the design of events of all kinds and sizes. All rooms are equipped with state-of-the-art conference technology.

- Holds up to 2,000 guests
- Price on request
- 3 halls (can be combined into one large hall), 10 conference rooms on the ground floor, 2 conference rooms in the basement, a total of 46 possible combinations
- Direct location on lakeside
- Catering directly connected
- Full service from one source: planning, hotel booking, catering, supporting programme



Uferweg 15
D-88131 Lindau (island)

Pulverturm (Gunpowder Tower)

The Pulverturm was built in 1508 and was for many years used for military purposes. Today the round building can host exclusive events for up to 40 people. On the ground floor there is a wardrobe, counter and a fully equipped kitchen. The upper floor offers a great view of Lake Constance - especially at sunset the view from the western side of the island to the water and mountains is fantastic.

- Up to 40 people
- Price on request
- Incl. kitchen (first floor: banquet or block seating possible)
- Direct location on the shore of Lake Constance
- Catering provider freely selectable
- Full service from one source: planning, hotel booking, catering, supporting programme

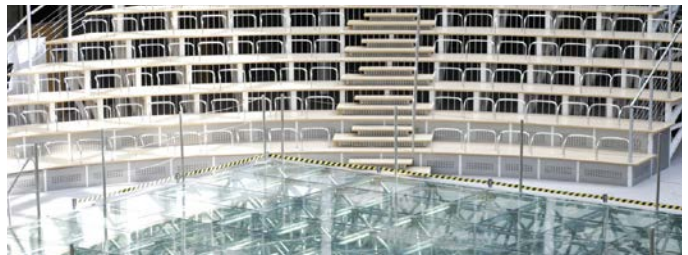


Lindau Tourismus und Kongress GmbH
Linggstr. 3
D-88131 Lindau (Island)

Mangturm (Mang Tower)

This stone building, measuring 65 feet, was built in the 12th century and was once part of the medieval town defences. From the room on the top floor, you have a fascinating panoramic view of the lake and mountains and this is the ideal place for a champagne reception or apéritif.

- Maximum group size: 24 people
- Price on request
- Direct location on the waterfront promenade



Kemptener Str. 99
D-88131 Lindau (mainland)

K99 – Event Location

The modern, glass architecture of the Denkfabrik (Ideas factory) provides a great setting for company celebrations, exhibitions, presentations or trade fairs. This easily-accessible building is ideally located on the main road; at the same time, the rear terrace offers a view of the green surroundings, including the neighboring golf course. The top floor of the parking deck with lake view and alpine panorama can also be used.

- Holds up to 808 people
- Price on request
- 20,000 sq.ft. atrium (height-adjustable stage, exhibition area, tribune seats single or with backrest, partial seating possible) and 1 additional event room
- Catering by external service provider possible
- 324 parking spaces, bus access possible



Brettermarkt 10
D-88131 Lindau (Island)

Forum am See (The Lake Forum)

The building, once built as recreation rooms for military officers, has become a modern event location from which you can enjoy a magnificent view of the yacht harbor and the mountain panorama. Parts of the historical interior architecture still exist.

- Max. 80 people
- Price on request
- Direct location at the yacht harbor on the island



Lindi Bodensee
Lindenhofweg 41
D-88131 Lindau

Lindi Beach Club

This new beach club building was constructed in 2021 as an event location. The room is located directly on the water and offers a magnificent view over Lake Constance and the mountains. The windows on the lake side can be opened up and the area between the building and lake is also exclusively available.

- Holds up to 50 people
- Price on request
- Direct location on the lake with lake access
- Barbecue and grill buffet
- Champagne receptions
- Kajak and stand-up paddleboard rental



Pfänderbahn AG
Steinbruchgasse 4
A-6900 Bregenz

Pfänder Seminar Room

This seminar room, furnished in modern Bregenzerwald style, is located at an altitude of 3,490 ft above sea level. From here, the world is at your feet - the unique location ensures a change of perspective and plenty of creativity for all seminar participants.

- Holds up to 50 people
- Half day 250 €; full day 300 €
- Directly above the cable car station at the top of the Pfänder mountain

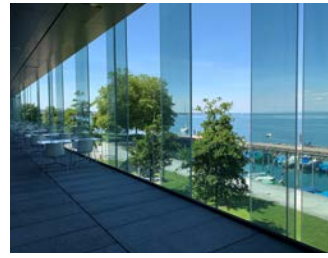


Kongresskultur Bregenz GmbH
Platz der Wiener Symphoniker
A-6900 Bregenz

Festival Hall Bregenz

The Festival Hall is located directly on the lakeside in the center of Bregenz and has excellent transport connections. The various rooms can be flexibly combined - and used for any type of event format. This architecturally exceptional building is one of the most renowned venues of its size worldwide.

- 23 modern and variable rooms with the best technical equipment including a multifunctional workshop stage
- Green Meeting certified
- Directly adjacent to the famous Bregenz Festival lake stage



Churerstrasse 10
CH-9400 Rorschach

Würth Haus Rorschach

The Würth Haus Rorschach is a modern event location directly on Lake Constance, offering generous, flexible premises. All are equipped with the latest event technology and can be used for events of different sizes. Contemporary art exhibitions are also regularly held here.

- Holds up to 700 people
- From 340 CHF
- Carmen Würth Hall and a further 16 meeting and seminar rooms

BODENSEE TRIPS & TOURS



**Our location is, in our opinion,
the most beautiful lake in Europe.**

„Bodensee Trips & Tours“ (BTT) is a division of Lindau Tourismus und Kongress GmbH, which arranges hotel services and supporting programmes for group travel and business tourism /MICE. BTT thus acts as a contact agency for incoming enquiries.

We are Lake Constance fans, through and through, and we like to share this enthusiasm. We are the first point of contact for guests visiting our beautiful region. Our services include detailed advice, booking accommodation and arranging excursions and incentives.

Whether for individual travelers, small or large groups, regional or international visitors - we are one of the biggest hosts on Lake Constance and we love doing it.

**We do not only look after visitors.
We fulfil dreams, serve desires and win fans.**

HOST WITH PASSION

This is how you benefit from our services:

- **Customised packages**

Arrival, cultural and sightseeing program, catering, accommodation: tell us what you require and we'll provide it. You can decide if you want us to take over the complete organization or arrange individual modules which can be combined.

- **Everything from a single source**

One contact person, a closely-connected team, problem-solving mentality: all these things combine to help us act quickly and efficiently. For our partners this means minimum effort with maximum results. We offer our support in German, English, French, Italian and Spanish.

- **Cross-border networking**

National borders present no barriers for our guests - or for us. Our cooperation with partners in the region is based on what unites us: the common goal of providing our guests with an unforgettable stay.

From the first enquiry, to the preparation of offers and program coordination, leading on to the implementation with the guest groups on site, and finally the subsequent final accounting: we'll take care of it!



Alexandra Bahner
Guided tours and
Sales MICE



Nathalie von Hoyer
Group Travel and
Sales Experiences



Pauline Kegele
Group Travel and
Sales Experiences

OUR NETWORK



MITGLIED IM



**mice
lab:**



Deutsche Alpenstraße

Bodensee Trips & Tours

a business unit of:
Lindau Tourismus und Kongress GmbH
Linggstr. 3
88131 Lindau (Bodensee)
Germany
www.bodensee-trips-tours.com

Contact

info@bodensee-trips-tours.com
Phone +49 8382 8899900

Photography

Photo credits (©)/Photographers
(Legend: S = page and following page number)

S. 1 © Hari Pulko, S. 3 © WE SUM, S. 5 Hoher Kasten Drehrestaurant und Seilbahn AG, S. 8 Baden, hintere Insel © Hari Pulko, S. 13 Bodensee Limousinen Service GbR, S. 14 Mainau GmbH © Achim Mende, S. 15 Pfänderbahn AG_Othmar Heidegger; Mainau GmbH © Achim Mende, S. 16 Zeppelinflug © Achim Mende; LTK © Hari Pulko, S. 17 Bregenz ©, Hari Pulko, LTK Stadtführungen © Hari Pulko, S. 18 LTK © Hari Pulko, Mainau © Achim Mende, S. 19 Insel Reichenau © Helmut Scham, Mainau GmbH © Achim Mende, S. 20 Marketing und Tourismus Konstanz GmbH © Dagmar Schwelle; Maestrani Chocolarium, herbstshooting-lra_fs20-28 © Landkreis Lindau (Bodensee), S. 21 LTK © Hari Pulko, S. 22 LTK © Hari Pulko, S. 23 Hotel Alte Schule Hübler GmbH, Boutique Hotel Adara, S. 24 Hotel garni Brugger © Wolfgang Schneider; Ebner Boutique-Hotel und Konditorei © Wolfgang Schneider, S. 25 Inselhotel © Ludwig Maier, Hotel-Pension Seereich Ivanka Blagus, S. 26 Hotel Lindauer Hof Betriebs GmbH; YachtHotel Helvetia Karl Nitsche GmbH & Co. Hotelbetriebs KG © PM Ringo, S. 27 Hotel Reutemann-Seegarten und Bayerischer Hof Stolze-Spaeth KG, S. 28 © Hotel Vis à Vis, © Premier Inn Holding GmbH, S. 29 Hotel Bad Schachen GmbH & Co. KG (Nutzungsrechte begrenzt bis Ende 2020) und Alpenblick Oberstaufen, S. 30 GANTER Mohren und 47 Konstanz, S. 31 © Sheraton Dornbirn; © Hotel Weisses Kreuz, S. 32 © Hotel Messmer; © Grand Hotel Bregenz, S. 33 © Hotel Germania; © Oberwaid AG, S. 34 © Hotel Säntispark, S. 35 © Bregenz Badehaus, S.36 LTK © Hari Pulko S. 37 YachtHotel Helvetia © Karl Nitsche GmbH & Co. Hotelbetriebs KG, LTK © David Knipping; ©Hotel Engel GmbH, Hotel Bayerischer Hof © Stolze-Spaeth KG, S. 38 Restaurant Hotel Reutemann-Seegarten © Stolze-Spaeth KG, Hotel Restaurant Alte Post © Ingrid Manz, Strandhaus © Winter+Winter GmbH, Wissingers GbR im Schlechterbräu © Meino Wissinger, S. 39 Hotel Lindauer Hof Betriebs GmbH Stockfoto Freepik, Eilguthalle © Kolaha Gastro GmbH, © Ebner Boutique-Hotel und Konditorei, S. 40, Theater Café Lindau Rogier de Boer, Stockfoto, S. 41 Konzil, Weingut © Florian Trykowski, S. 42 Pfänderbahn AG_Othmar Heidegger; Appenzeller Schaukäserei © Fotografie Manufaktur Roger

Publisher

Lindau Tourismus und Kongress GmbH
Linggstraße 3
88131 Lindau (Bodensee)
Germany
info@lindau-tourismus.de
www.lindau.de
Phone + 49 8382 8899900
Fax. +49 8382 8899888

Concept and Design

Zone für Gestaltung
www.gestaltung.zone

Version:

February 2024

Neither the publisher nor the advertisers are liable for any printing misprints in this brochure. Subject to change. Reprints, including excerpts, only with the permission of Lindau Tourismus.

Oberholzer, S. 43 LTK © Hari Pulko, S. 44 © WESUM GmbH, S. 45 Weinprobe Weingut Haug; Marion Appel, S. 46 Marion Appel, Maestrani Chocolarium, S. 47 Appenzeller Schaukäserei © Fotografie Manufaktur Roger Oberholzer, S. 48/49 Bikeschool Bodensee, Allgäu Events GmbH & Co. KG, Allgäu Events GmbH & Co. KG, City Hunters GmbH & Co. KG, S. 50 BSB (keine Namensnennung erforderlich laut Pixx.io), Vorarlberg Lines © Reinhard Fasching, S. 51 Schweizerische Bodensee-Schiffahrtsgesellschaft AG, S. 52 Schweizerische Bodensee-Schiffahrtsgesellschaft AG, S. 53 Historische Schifffahrt Bodensee, S. 54 Strandhaus © Winter+Winter GmbH, S. 55 Lindenhofpark © Helmut Scham, Gartenschau Logo: Natur in Lindau GmbH, Visualisierung: Atelier Loidl Landschaftsarchitekten Studio Wessendorf, S. 55 © WESUM GmbH, S. 56 © Frederick Sams, S. 58 LTK © Hari Pulko, friedens räume © Hari Pulko, S. 59 Kunstmuseum Marc Chagall, Der Lustgarten, Blatt 34 des Künstlerbuchs „Daphnis & Chloe“, Mourlot 341, 1956-1961, Horst und Gabriele Siedle-Kunststiftung, Foto: Bernhard Strauss, Freiburg, Marc Chagall © VG Bild-Kunst, Bonn 2020, Stadt Meersburg, Abteilung Tourismus und Veranstaltungen © Martin Maier Photography BFF, S. 60 Zeppelin Museum Friedrichshafen, S. 61 Bregenger Festspiele © Paul Joos, S. 62 Deutsche Zeppelin Reederei © Achim Mende, S. 63 LTK © Hari Pulko, Marketing und Tourismus Konstanz © Dagmar Schwelle S. 64 Pfänderbahn AG_Othmar Heidegger; Hoher Kasten Drehrestaurant und Seilbahn AG, S. 65 Luftseilbahn Wasserauen-Ebenalp AG, Säntis, S. 66 Schloss Vaduz © Julian Konrad Photography, S. 67 © Säntis-Schwebebahn AG, S. 68 LTK © Hari Pulko, S. 69 IHL 1 © Christian Flemming, IHL 2 © Hari Pulko, IHL 3 © Aldo Amoretti, S. 70 Mangturm Bild 1 © Frederick Sams, Mangturm Bild 2 © Hari Pulko, Mangturm Bild 3 © Frederick Sams, S. 71 Forum am See PERI GmbH, Lindi © Timm Stade, S. 72 Pfänderbahn AG/ Bregenz Tourismus und Stadtmarketing GmbH © Christiane Setz, Festspielhaus Bregenz Bild 1 © Hari Pulko und Kongresskultur Bregenz, S. 73 Würth Haus Bild 1 © Thomas Staub, Würth Haus Bild 2 © Würth Haus Rorschach, Würth Haus Bild 3 © Ueli Steingruber, S. 74 © WESUM GmbH, S. 75 Mitarbeiter LTK © David Knipping

Lindau
B O D E N S E E



VERY CLOSE
TO PARADISE

